

CPR Certificate Not Signed

Price

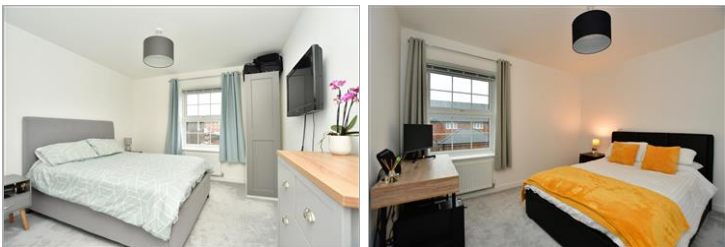
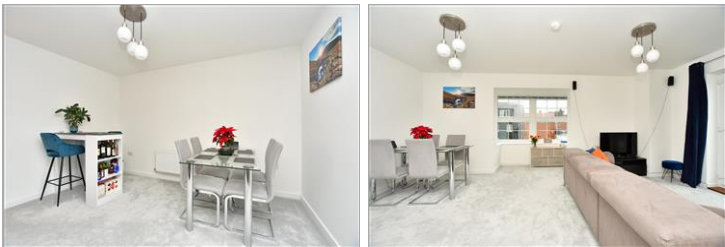
£270,000

Leasehold

2x  2x  1x 

Bailey House, Worrall
Drive, Wouldham,
Rochester, Kent, ME1

Wards
Helping you move forwards



Main features

- Ideal first time buy!
- Popular village location with riverside and countryside walks
- Contemporary decoration throughout
- Allocated parking
- Close to motorway links with access to London

Accommodation

FIRST FLOOR

Hallway

Lounge/Diner: 19'2 x 16'0 (5.85m x 4.88m)

Balcony

Kitchen: 10'5 x 10'2 (3.18m x 3.10m)

Bedroom 1: 11'3 x 11'0 (3.43m x 3.36m)

En-suite Shower Room: 6'7 x 4'9 (2.01m x 1.45m)

Bedroom 2: 11'5 x 10'6 (3.48m x 3.20m)

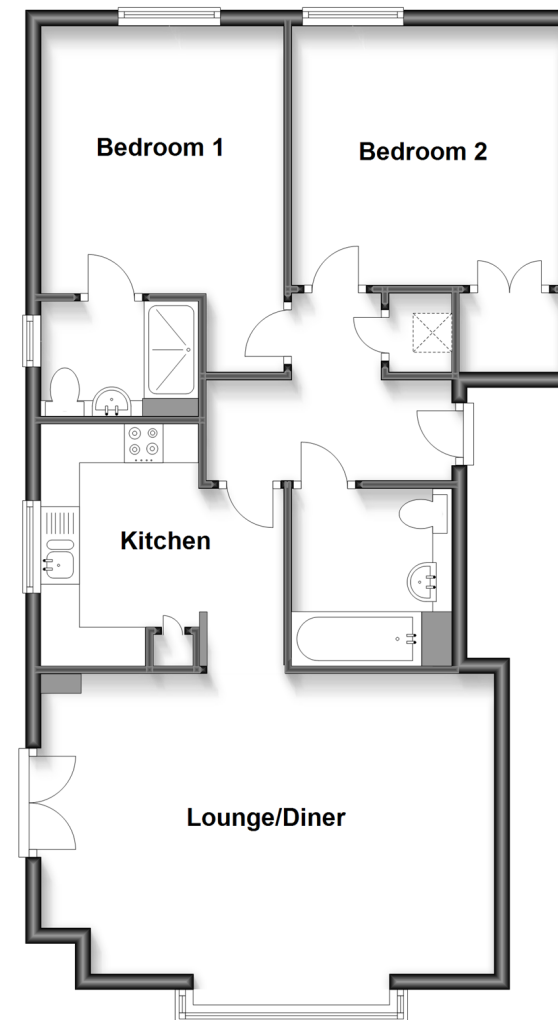
Bathroom: 7'6 x 7'2 (2.29m x 2.19m)

OUTSIDE

Allocated Parking

First Floor

Approx. 73.4 sq. metres (789.6 sq. feet)



Call Rochester - 01634 830925 ■ wardsof Kent.co.uk

- Legal advice should be taken to verify fixtures/fittings, planning, alterations and/or lease details
- Appliances & services are untested, dimensions are approximate and floor plans are not to scale



11529358/20221220/DG/JP