



Guide Price
£300,000

Freehold

2x  1x  1x 

**Oldfield Drive,
Wouldham, Rochester,
Kent, ME1**

OVER 60?

Secure this property
for up to **59% less!**

Wards
Helping you move forwards



Main features

- Ideal first time buy!
- Picturesque village location with riverside and countryside walks
- Allocated parking
- Convenient motorway access for M20/M2/A2
- Local Co-op and primary school nearby

Accommodation

GROUND FLOOR

Hallway
Cloakroom
Kitchen: 10'7 x 6'11 (3.23m x 2.11m)
Lounge/Diner: 14'6 x 12'8 (4.42m x 3.86m)
Conservatory: 12'0 x 8'0 (3.66m x 2.44m)

FIRST FLOOR

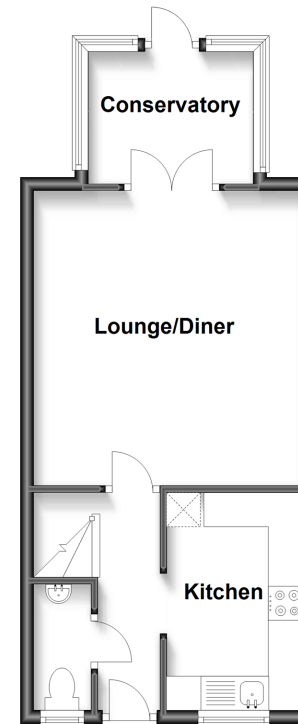
Landing
Bedroom 1: 12'8 x 9'0 (3.86m x 2.75m)
Bedroom 2: 12'8 x 7'2 (3.86m x 2.19m)
Bathroom

OUTSIDE

Rear Garden
Allocated Parking

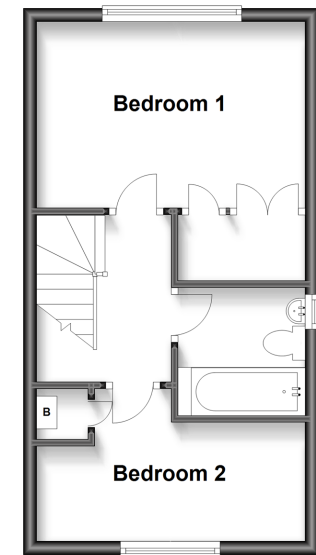
Ground Floor

Approx. 35.1 sq. metres (377.8 sq. feet)



First Floor

Approx. 30.1 sq. metres (324.3 sq. feet)



Call Rochester - 01634 830925 ■ wardsofkent.co.uk

■ Legal advice should be taken to verify fixtures/fittings, planning, alterations and/or lease details
■ Through a Homewise Home For Life Plan people aged 60+ can secure this property for up to 59% less, by purchasing a Lifetime Lease.

■ Appliances & services are untested, dimensions are approximate and floor plans are not to scale



11529360/20230503/DM/JP