



**Guide Price**  
**£180,000**

**Leasehold**

2x  1x  1x 

**Secretan Road,  
Rochester, Kent, ME1**

*Wards*  
Helping you move forwards





## Main features

- Ideal first time buy or investment property!
- Extended lease
- Allocated parking
- Quiet location with all amenities nearby
- Close to convenient motorway links M20/M2/A2

## Accommodation

### FIRST FLOOR

Hallway

Lounge/Diner: 15'2 x 10'8 (4.63m x 3.25m)

Kitchen: 12'1 x 5'6 (3.69m x 1.68m)

Bedroom 1: 12'4 x 7'7 (3.76m x 2.31m)

Bedroom 2: 8'0 x 7'2 (2.44m x 2.19m)

Bathroom: 12'9 x 5'9 (3.89m x 1.75m)

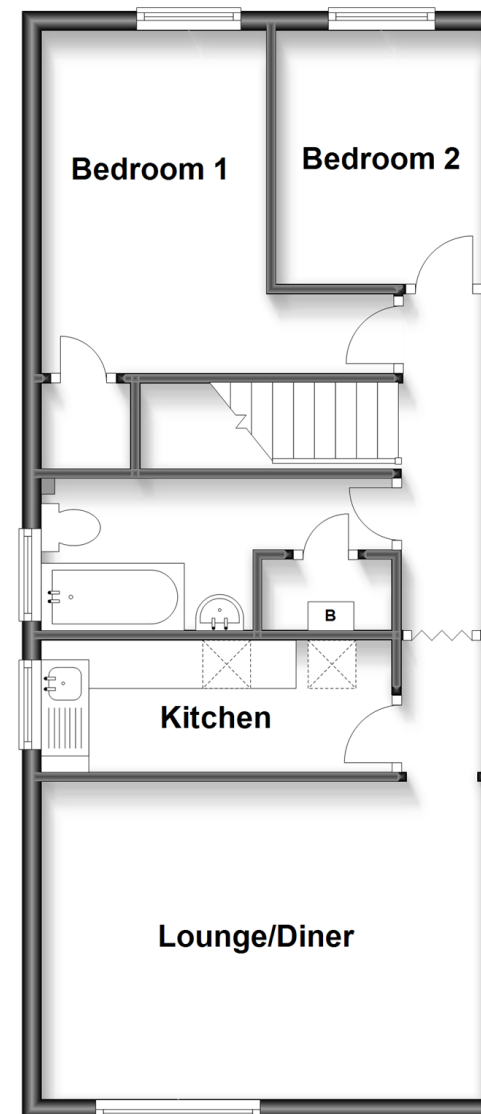
### OUTSIDE

Allocated Parking

Communal Gardens

## First Floor

Approx. 51.4 sq. metres (552.9 sq. feet)



**Call Rochester - 01634 830925 ■ [wardsofkent.co.uk](http://wardsofkent.co.uk)**

- Legal advice should be taken to verify fixtures/fittings, planning, alterations and/or lease details
- Appliances & services are untested, dimensions are approximate and floor plans are not to scale