



Price
£375,000

Freehold

2x  1x  1x 

**St. William's Way,
Rochester, Kent, ME1**

OVER 60?

Secure this property
for up to **59% less!**

Wards
Helping you move forwards



Main features

- Beautiful views towards Rochester
- Useful conservatory overlooking the garden
- Fantastic sunny landscaped garden with large patio
- Close to all local amenities
- Large garage with gated off-road parking

Accommodation

SPLIT LEVEL GROUND FLOOR

Hallway

Lounge: 12'6 x 11'0 (3.81m x 3.36m)

Kitchen: 9'9 x 8'7 (2.97m x 2.62m)

Conservatory: 16'3 x 8'8 (4.96m x 2.64m)

Bedroom 1: 12'6 x 10'9 (3.81m x 3.28m)

Bedroom 2: 9'9 x 9'1 (2.97m x 2.77m)

Bathroom: 7'3 x 5'6 (2.21m x 1.68m)

OUTSIDE

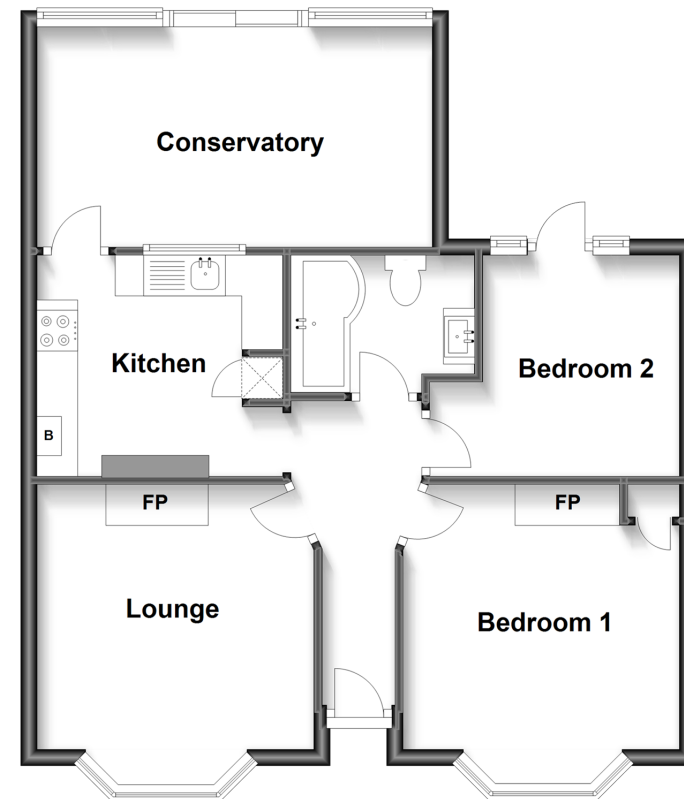
Front and Rear Garden

Garage: 15'4 x 12'8 (4.68m x 3.86m)

Gated Off-road Parking

Split Level Ground Floor

Approx. 61.0 sq. metres (656.3 sq. feet)



Call Rochester - 01634 830925 ■ wardsofkent.co.uk

- Legal advice should be taken to verify fixtures/fittings, planning, alterations and/or lease details
- Appliances & services are untested, dimensions are approximate and floor plans are not to scale
- Through a Homewise Home For Life Plan people aged 60+ can secure this property for up to 59% less, by purchasing a Lifetime Lease.



11529369/20230502/DP/JP