



Price
£360,000

Freehold

3x  2x  1x 

**Bridge Road, Rochester,
Kent, ME1**

Wards
Helping you move forwards



Main features

- Ideal first time buy!
- Set on a large corner plot
- Spacious living accommodation and double bedrooms
- Upstairs bathroom and downstairs shower room
- Garage and off-road parking

Accommodation

GROUND FLOOR

Porch: 7'5 x 2'6 (2.26m x 0.76m)

Hallway

Shower room: 7'8 x 5'5 (2.34m x 1.65m)

Lounge: 12'9 x 10'9 (3.89m x 3.28m)

Kitchen/Dining Area: 20'7 x 12'9 (6.28m x 3.89m)

FIRST FLOOR

Landing

Bedroom 1: 17'10 x 9'6 (5.44m x 2.90m)

Bedroom 2: 13'0 x 11'9 (3.97m x 3.58m)

Bedroom 3: 12'9 x 8'9 (3.89m x 2.67m)

Bathroom: 7'6 x 6'8 (2.29m x 2.03m)

OUTSIDE

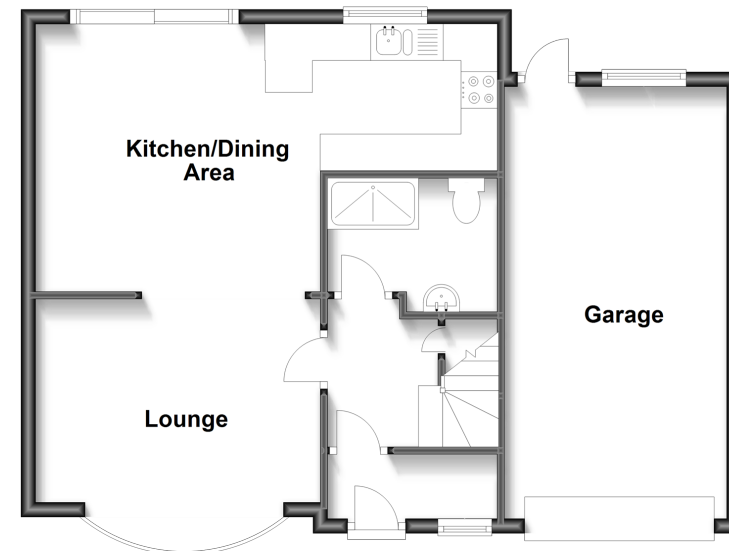
Front and Rear Garden

Garage

Off-road Parking

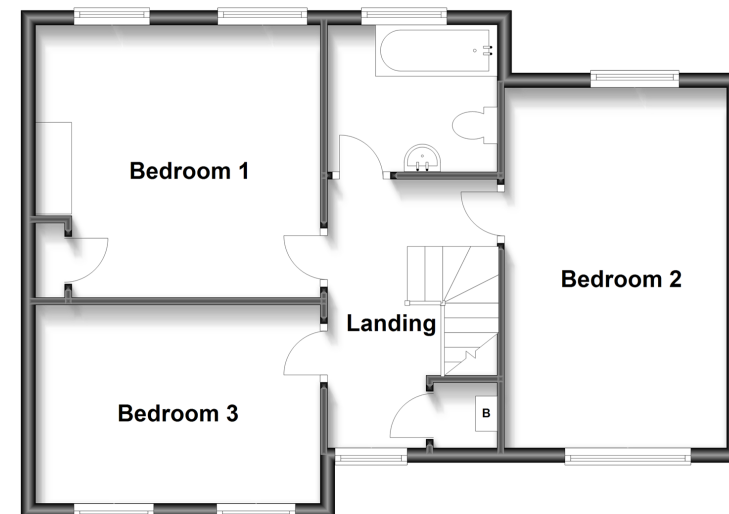
Ground Floor

Approx. 61.3 sq. metres (659.3 sq. feet)



First Floor

Approx. 55.4 sq. metres (595.9 sq. feet)



Call Rochester - 01634 830925 ■ wardsofkent.co.uk

- Legal advice should be taken to verify fixtures/fittings, planning, alterations and/or lease details
- Appliances & services are untested, dimensions are approximate and floor plans are not to scale



11529389/20230717/AB/AB