



**Offers In
Excess Of
£264,000
Freehold**

2x  1x  1x 

**Worrall Drive,
Wouldham, Rochester,
Kent, ME1**

Wards
Helping you move forwards



Main features

- Ideal first time buy!
- Contemporary decoration throughout
- Village location with riverside walks
- Allocated parking and useful storage area
- Close to motorway links M2/M20

Accommodation

GROUND FLOOR

Entrance Hallway

FIRST FLOOR

Kitchen/Living Area

Bedroom 1: 14'8 x 8'9 (4.47m x 2.67m)

Bedroom 2: 10'3 x 9'3 (3.13m x 2.82m)

Bathroom: 6'8 x 6'8 (2.03m x 2.03m)

OUTSIDE

Allocated Parking

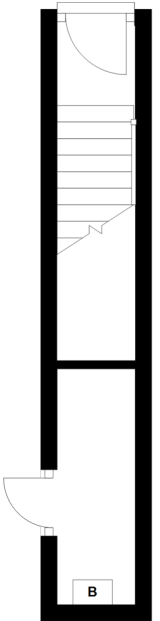
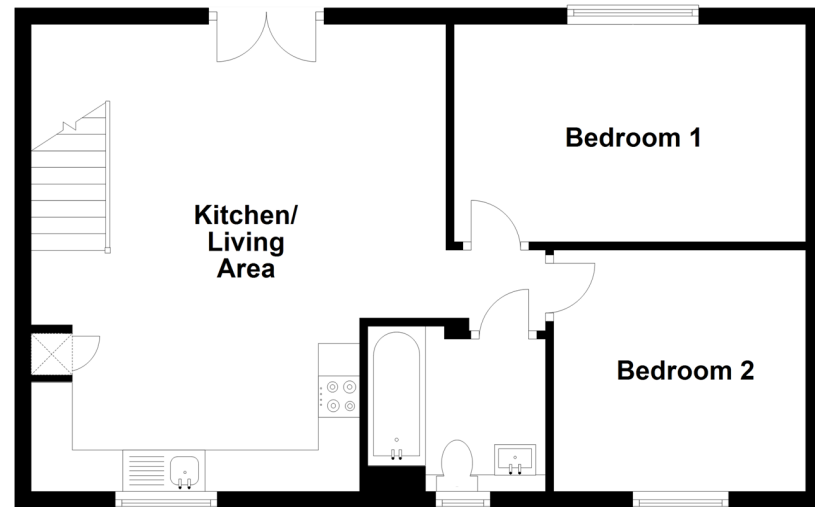
Storage Area

Ground Floor

Approx. 6.6 sq. metres (71.4 sq. feet)

First Floor

Approx. 53.0 sq. metres (571.0 sq. feet)



Call Rochester - 01634 830925 ■ wardsofkent.co.uk

■ Legal advice should be taken to verify fixtures/fittings, planning, alterations and/or lease details

■ Appliances & services are untested, dimensions are approximate and floor plans are not to scale



11529401/20230717/DG/JP