



Price
£475,000

Freehold

3x  1x  2x 

**Model Cottages, Old
Church Road, Burham,
Rochester, Kent, ME1**

OVER 60?

Secure this property
for up to **59% less!**

Wards
Helping you move forwards



Main features

- Semi-rural location on the outskirts of historic Rochester
- Period features including a cosy open fire place
- Catchment area for top performing schools
- Juliet balcony with far reaching views of the countryside
- Off-road parking

Accommodation

GROUND FLOOR

Hallway

Lounge : 20'0 x 11'11 (6.10m x 3.63m)

Dining Area: 11'11 x 10'6 (3.63m x 3.20m)

Kitchen: 10'7 x 8'3 (3.23m x 2.52m)

FIRST FLOOR

Landing

Bedroom 1: 11'11 x 10'7 (3.63m x 3.23m)

Dressing Room

Bedroom 2: 9'11 x 8'10 (3.02m x 2.69m)

Bedroom 3: 8'0 x 7'11 (2.44m x 2.41m)

Bathroom: 8'10 x 6'10 (2.69m x 2.08m)

OUTSIDE

Front and Rear Garden

Shed

Off-road Parking

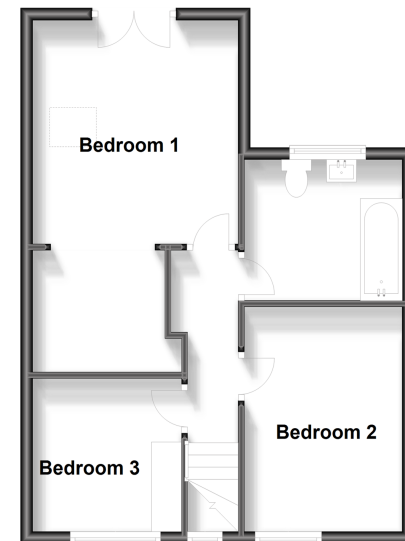
Call Rochester - 01634 830925 ■ wardsofkent.co.uk

- If buying to let, the energy rating will need to be improved to at least 'E' rating before you can let the property
- Legal advice should be taken to verify fixtures/fittings, planning, alterations and/or lease details
- Appliances & services are untested, dimensions are approximate and floor plans are not to scale
- Through a Homewise Home For Life Plan people aged 60+ can secure this property for up to 59% less, by purchasing a Lifetime Lease.

Ground Floor
Approx. 48.6 sq. metres (522.8 sq. feet)



First Floor
Approx. 45.6 sq. metres (490.6 sq. feet)



11529411/20230920/DP/AB