



Guide Price
£425,000

Freehold

3x  2x  1x 

**Trevithick Drive,
Wouldham, Rochester,
Kent, ME1**

Wards
Helping you move forwards



Main features

- Stunning family home with a contemporary design throughout
- Located in a picturesque village location
- Countryside and riverside walks on your doorstep
- Car port and off-road parking
- Close to motorway links

Accommodation

GROUND FLOOR

Hallway
Cloakroom
Kitchen/Diner: 20'6 x 8'2 (6.25m x 2.49m)
Lounge: 16'6 x 16'3 (5.03m x 4.96m)

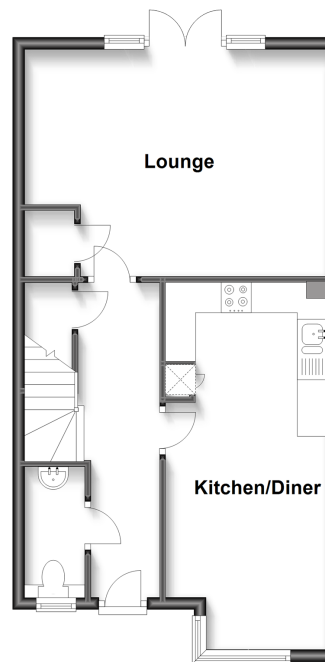
FIRST FLOOR

Landing
Bedroom 1: 16'9 x 12'3 (5.11m x 3.74m)
En-suite Shower Room: 7'8 x 5'1 (2.34m x 1.55m)
Bedroom 2: 12'8 x 6'6 (3.86m x 1.98m)
Bedroom 3: 9'8 x 9'4 (2.95m x 2.85m)
Bathroom: 7'0 x 6'6 (2.14m x 1.98m)

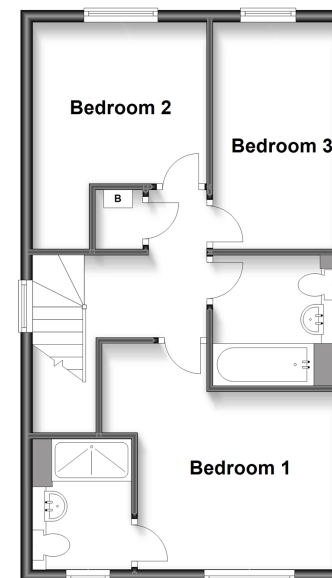
OUTSIDE

Rear Garden
Car-Port and Off-road Parking

Ground Floor
Approx. 47.4 sq. metres (510.6 sq. feet)



First Floor
Approx. 45.7 sq. metres (491.9 sq. feet)



Call Rochester - 01634 830925 ■ wardsofkent.co.uk

■ Legal advice should be taken to verify fixtures/fittings, planning, alterations and/or lease details

■ Appliances & services are untested, dimensions are approximate and floor plans are not to scale



11529418/20230331/RW/ME