



Guide Price
£800,000

Freehold

3x  2x  2x 

**Priestfields, Rochester,
Kent, ME1**

OVER 60?

Secure this property
for up to **59% less!**

Wards
Helping you move forwards



Main features

- Executive family home
- Situated in one of Rochester's most prestigious roads
- Potential to extend subject to planning permission
- Walking distance to historic High Street and high speed station
- Offered with no forward chain

Accommodation

GROUND FLOOR

Porch
Hallway
Lounge: 16'0 x 11'8 (4.88m x 3.56m)
Kitchen: 10'0 x 10'0 (3.05m x 3.05m)
Dining Area/Breakfast Area: 20'0 x 8'0 (6.10m x 2.44m)
Bedroom 3: 11'9 x 11'7 (3.58m x 3.53m)
Shower Room: 5'6 x 5'6 (1.68m x 1.68m)
Former Garage: 13'0 x 13'0 (3.97m x 3.97m)
Cloakroom

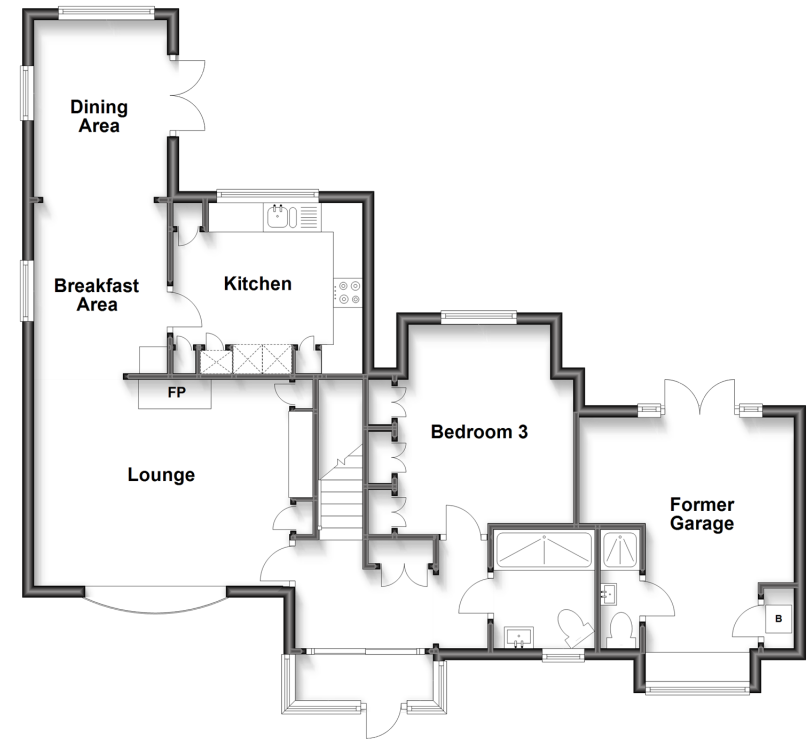
FIRST FLOOR

Landing
Bedroom 1: 14'6 x 10'0 (4.42m x 3.05m)
Bedroom 2: 11'8 x 9'7 (3.56m x 2.92m)
Bathroom: 6'9 x 5'8 (2.06m x 1.73m)

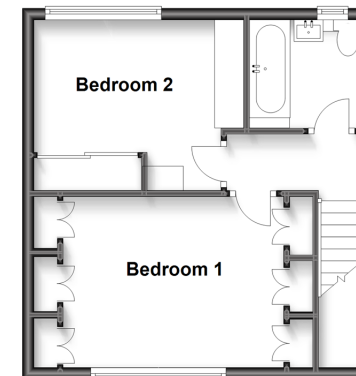
OUTSIDE

Front and Rear Garden
Off-road Parking

Ground Floor
Approx. 83.2 sq. metres (895.5 sq. feet)



First Floor
Approx. 33.7 sq. metres (363.3 sq. feet)



Call Rochester - 01634 830925 ■ wardsofkent.co.uk

- Legal advice should be taken to verify fixtures/fittings, planning, alterations and/or lease details
- Appliances & services are untested, dimensions are approximate and floor plans are not to scale
- Through a Homewise Home For Life Plan people aged 60+ can secure this property for up to 59% less, by purchasing a Lifetime Lease.



11529426/20230517/JP/ME