



OVER 60?

Secure this property
for up to **59% less!**

Guide Price
£300,000

Freehold

3x  1x  1x 

**Carton Close, Rochester,
Kent, ME1**

Wards
Helping you move forwards



Main features

- Recently refurbished throughout and ideal for a first time buyer
- Close to schools and local amenities
- Ideal for the commuter as close to motorway links M2/M20/A2
- Off-road Parking
- Offered with no forward chain

Accommodation

GROUND FLOOR

Porch
Hallway
Lounge: 17'8 x 15'0 (5.39m x 4.58m)
Kitchen: 10'4 x 8'5 (3.15m x 2.57m)

FIRST FLOOR

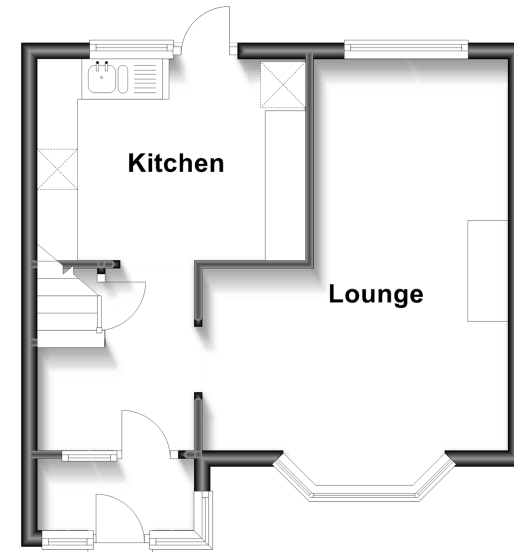
Landing
Bedroom 1: 11'3 x 9'10 (3.43m x 3.00m)
Bedroom 2: 11'2 x 7'9 (3.41m x 2.36m)
Bedroom 3: 8'8 x 7'3 (2.64m x 2.21m)
Shower Room: 7'4 x 4'5 (2.24m x 1.35m)

OUTSIDE

Rear Garden
Off-road Parking

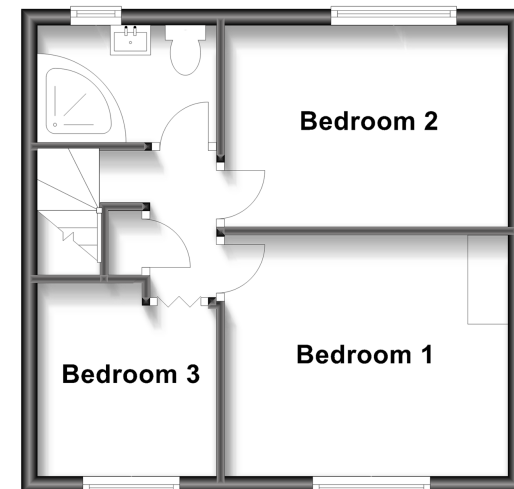
Ground Floor

Approx. 328.4 sq. feet



First Floor

Approx. 350.8 sq. feet



Call Rochester - 01634 830925 ■ wardsofkennt.co.uk

- Legal advice should be taken to verify fixtures/fittings, planning, alterations and/or lease details
- Appliances & services are untested, dimensions are approximate and floor plans are not to scale
- Through a Homewise Home For Life Plan people aged 60+ can secure this property for up to 59% less, by purchasing a Lifetime Lease.



11529432/20230624/DG/JP