



Guide Price

£270,000

Leasehold

2x  1x  1x 

**Five Bells Lane,
Rochester, Kent, ME1**

OVER 60?

Secure this property
for up to **59% less!**

Wards
Helping you move forwards



Main features

- Immaculate condition and ready to move into!
- Cul-de-sac position
- Off-road parking
- Walking distance to historic High Street with high speed station
- Offered with no forward chain

Accommodation

GROUND FLOOR

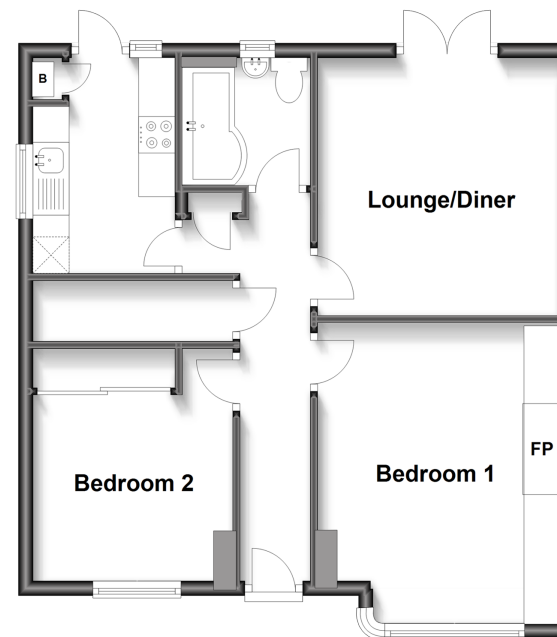
Hallway
 Bedroom 1: 11'5 x 10'8 (3.48m x 3.25m)
 Bedroom 2: 9'8 x 9'2 (2.95m x 2.80m)
 Kitchen: 9'8 x 6'5 (2.95m x 1.96m)
 Bathroom
 Lounge/Diner: 11'5 x 10'5 (3.48m x 3.18m)

OUTSIDE

Rear Garden
 Off-road Parking

Ground Floor

Approx. 53.7 sq. metres (577.6 sq. feet)



Call Rochester - 01634 830925 ■ wardsofkent.co.uk

■ Legal advice should be taken to verify fixtures/fittings, planning, alterations and/or lease details
 ■ Through a Homewise Home For Life Plan people aged 60+ can secure this property for up to 59% less, by purchasing a Lifetime Lease.

■ Appliances & services are untested, dimensions are approximate and floor plans are not to scale