



Guide Price
£260,000

Freehold

2x  1x  2x 

**Mount Road, Borstal,
Rochester, Kent, ME1**

OVER 60?

Secure this property
for up to **59% less!**

Wards
Helping you move forwards



Main features

- Walking distance to both primary and secondary schools
- Conservatory
- Plenty of living space and a large rear garden
- Close to motorway links M2/M20/A2
- No forward chain

Accommodation

GROUND FLOOR

Lounge: 11'6 x 10'3 (3.51m x 3.13m)
 Dining Area: 11'3 x 10'2 (3.43m x 3.10m)
 Shower room: 6'9 x 3'4 (2.06m x 1.02m)
 Kitchen: 9'0 x 6'5 (2.75m x 1.96m)
 Conservatory: 10'6 x 7'8 (3.20m x 2.34m)

FIRST FLOOR

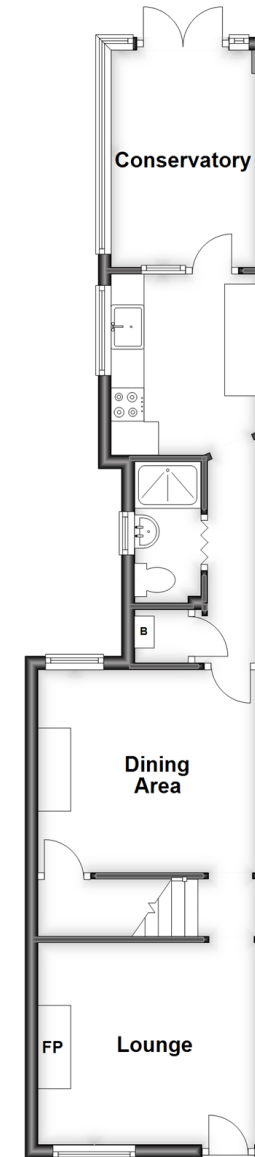
Landing
 Bedroom 1: 11'2 x 10'4 (3.41m x 3.15m)
 Bedroom 2: 11'3 x 10'2 (3.43m x 3.10m)

OUTSIDE

Rear Garden

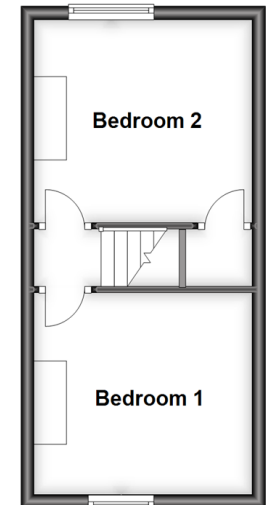
Ground Floor

Approx. 43.4 sq. metres (467.4 sq. feet)



First Floor

Approx. 23.9 sq. metres (256.8 sq. feet)



Call Rochester - 01634 830925 ■ wardsofkent.co.uk

- Legal advice should be taken to verify fixtures/fittings, planning, alterations and/or lease details
- Appliances & services are untested, dimensions are approximate and floor plans are not to scale
- Through a Homewise Home For Life Plan people aged 60+ can secure this property for up to 59% less, by purchasing a Lifetime Lease.



11529455/20230707/DM/JP