



Price
£640,000

Freehold

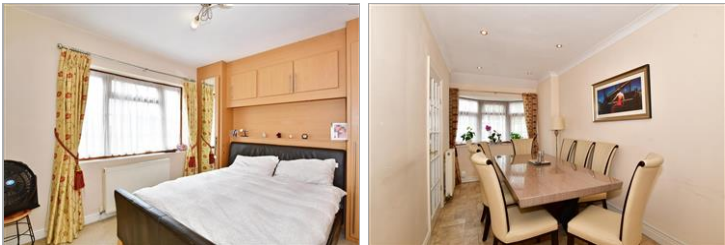
4x  2x  4x 

**City Way, Rochester,
Kent, ME1**

OVER 60?

Secure this property
for up to **59% less!**

Wards
Helping you move forwards



Main features

- Located in one of Rochester's most sought after roads
- Ground floor extension
- Large landscaped rear garden and brick built outbuilding
- Off-road parking for several cars
- Close to historic High Street with high speed links to London

Accommodation

GROUND FLOOR

Hallway
 Dining Room: 13'0 x 7'7 (3.97m x 2.31m)
 Lounge : 12'8 x 10'4 (3.86m x 3.15m)
 Sitting Room: 11'3 x 11'2 (3.43m x 3.41m)
 Kitchen: 16'3 x 11'9 (4.96m x 3.58m)
 Cloakroom: 4'6 x 2'11 (1.37m x 0.89m)
 Study: 8'5 x 6'11 (2.57m x 2.11m)

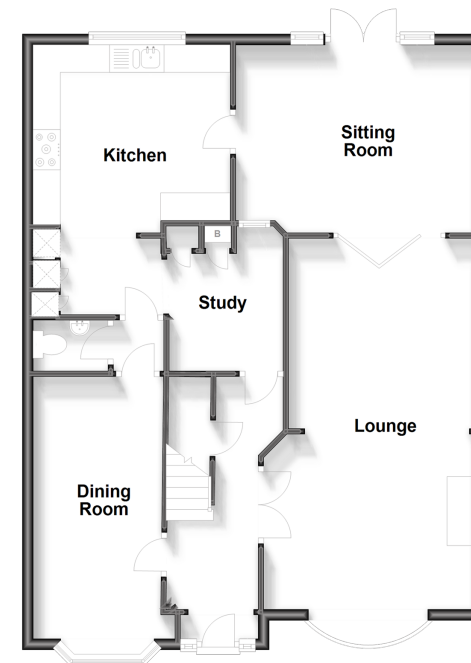
FIRST FLOOR

Landing
 Bedroom 1: 11'7 x 11'5 (3.53m x 3.48m)
 En-suite Shower Room: 6'7 x 6'0 (2.01m x 1.83m)
 Bedroom 2: 12'9 x 9'3 (3.89m x 2.82m)
 Bedroom 3: 10'9 x 7'6 (3.28m x 2.29m)
 Bedroom 4: 9'5 x 7'1 (2.87m x 2.16m)
 Bathroom: 7'6 x 6'7 (2.29m x 2.01m)

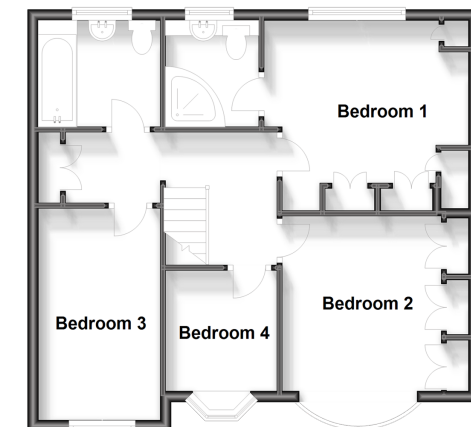
OUTSIDE

Rear Garden
 Outbuilding
 Off-road Parking

Ground Floor
 Approx. 85.7 sq. metres (922.3 sq. feet)



First Floor
 Approx. 54.9 sq. metres (591.2 sq. feet)



Call Rochester - 01634 830925 ■ wardsofkennt.co.uk

- Legal advice should be taken to verify fixtures/fittings, planning, alterations and/or lease details
- Appliances & services are untested, dimensions are approximate and floor plans are not to scale
- Through a Homewise Home For Life Plan people aged 60+ can secure this property for up to 59% less, by purchasing a Lifetime Lease.