



Price

£177,500

Leasehold

1x  1x  1x 

**St. Bartholomew's Place,
Hospital Lane,
Rochester, Kent, ME1**

Wards
Helping you move forwards



Main features

- 1 bed first floor apartment in historic town of Rochester
- Unique listed building with period features with a contemporary twist
- Bespoke kitchens and beautiful bathroom suites
- Close to town centre
- Commute to London in 37 minutes by train

Accommodation

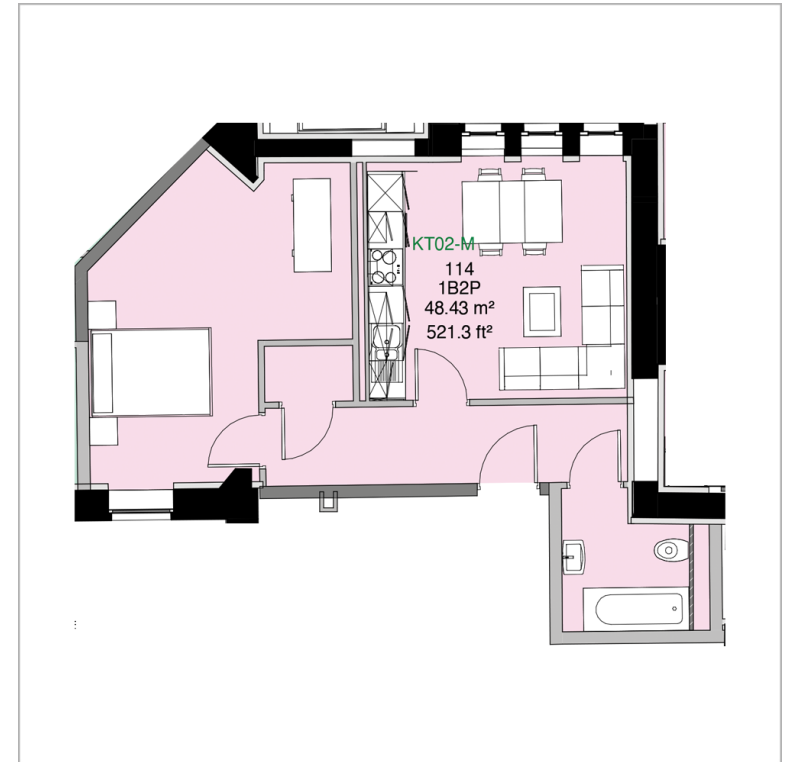
FIRST FLOOR

Entrance Hallway

Bedroom: 13'9 maximum x 9'4 (4.19m x 2.85m)

Bathroom: 7'9 x 7'8 (2.36m x 2.34m)

Lounge/ Kitchen/Dining Room: 14'5 x 12'5 (4.40m x 3.79m)



Call Rochester - 01634 830925 ■ wardsofkent.co.uk

- If buying to let, the energy rating will need to be improved to at least 'E' rating before you can let the property
- Legal advice should be taken to verify fixtures/fittings, planning, alterations and/or lease details
- Appliances & services are untested, dimensions are approximate and floor plans are not to scale



11529490/20231003/DG/JP