



Guide Price
£300,000

Freehold

4x  2x  2x 

**May Road, Rochester,
Kent, ME1**

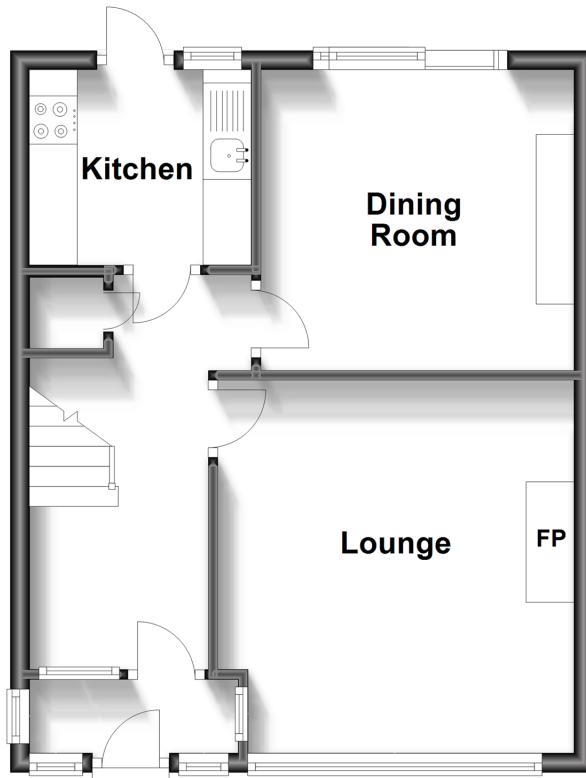
OVER 60?

Secure this property
for up to **59% less!**

Wards
Helping you move forwards

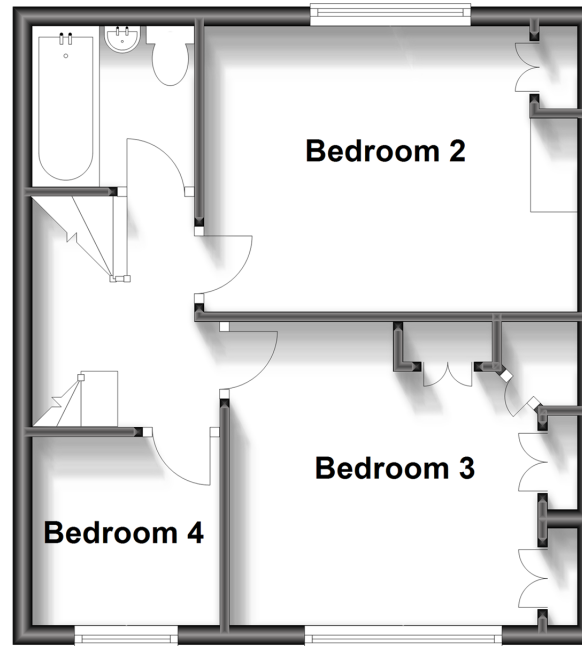
Ground Floor

Approx. 40.2 sq. metres (433.0 sq. feet)



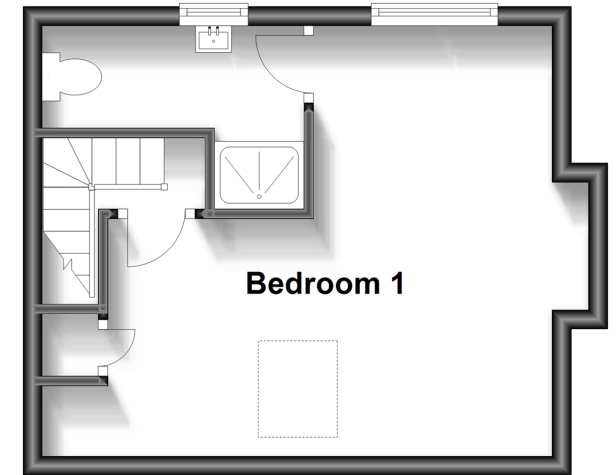
First Floor

Approx. 35.3 sq. metres (380.2 sq. feet)



Second Floor

Approx. 24.2 sq. metres (260.5 sq. feet)



Accommodation

GROUND FLOOR

Porch
Entrance Hall
Lounge: 13'3 x 12'7 (4.04m x 3.84m)
Dining Room: 11'1 x 10'7 (3.38m x 3.23m)
Kitchen: 6'11 x 6'11 (2.11m x 2.11m)

FIRST FLOOR

Landing
Bedroom 2: 10'6 x 9'8 (3.20m x 2.95m)
Bedroom 3: 12'9 x 10'3 (3.89m x 3.13m)
Bedroom 4: 7'2 x 6'4 (2.19m x 1.93m)
Bathroom: 5'6 x 5'3 (1.68m x 1.60m)

SECOND FLOOR

Landing
Bedroom 1: 14'7 x 13'6 (4.45m x 4.12m)
En-suite Shower Room: 9'0 x 5'11 (2.75m x 1.80m)



Main features

- Ideal first time buy!
- Spacious living accommodation with a lounge and separate dining room
- Loft room with en-suite
- Close to all local shops and amenities
- Catchment area for top performing schools



Nearest Schools

Primary Schools: Delce Junior School 0.5 miles St Margarets at Troy Town 0.5 miles

Secondary Schools: Rochester Grammar School for Girls 0.8 miles



Transport Information

Train Stations: Chatham 1.1 miles, Strood 1.6 miles, Rochester 1.8 miles



Address

May Road, Rochester, Kent, ME1



Directions

For directions to this property please contact us.



Wards
Helping you move forwards

Call Rochester Branch 01634 830925 ■ wardsofkent.co.uk



■ Legal advice should be taken to verify fixtures/fittings, planning, alterations and/or lease details ■ Appliances & services are untested, dimensions are approximate and floor plans are not to scale
■ Through a Homewise Home For Life Plan people aged 60+ can secure this property for up to 59% less, by purchasing a Lifetime Lease.



11529508/20230802/DM/NW