



OVER 60?

Secure this property
for up to **59% less!**

Guide Price
£225,000

Freehold

3x  1x  2x 

**Catherine Street,
Rochester, Kent, ME1**

Wards
Helping you move forwards



Main features

- Ideal first time buy
- Investment opportunity
- Enclosed rear garden
- Walking distance to the historic High Street and high speed station
- Catchment area for top performing schools

Accommodation

GROUND FLOOR

Hallway

Lounge: 12'9 x 10'0 (3.89m x 3.05m)

Dining Room: 10'0 x 9'3 (3.05m x 2.82m)

Kitchen: 9'3 x 7'6 (2.82m x 2.29m)

Bathroom: 7'6 x 6'2 (2.29m x 1.88m)

SPLIT LEVEL FIRST FLOOR

Landing

Bedroom 1: 12'8 x 9'10 (3.86m x 3.00m)

Bedroom 2: 12'8 x 9'9 (3.86m x 2.97m)

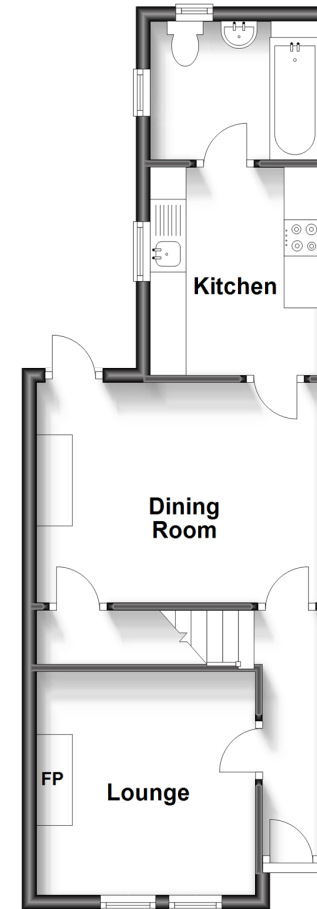
Bedroom 3: 8'6 x 7'7 (2.59m x 2.31m)

OUTSIDE

Rear Garden

Ground Floor

Approx. 38.9 sq. metres (419.1 sq. feet)



Split Level First Floor

Approx. 34.7 sq. metres (373.9 sq. feet)



Call Rochester - 01634 830925 ■ wardsofkent.co.uk

- Legal advice should be taken to verify fixtures/fittings, planning, alterations and/or lease details
- Appliances & services are untested, dimensions are approximate and floor plans are not to scale
- Through a Homewise Home For Life Plan people aged 60+ can secure this property for up to 59% less, by purchasing a Lifetime Lease.



11529516/20230921/DP/DM