



Guide Price
£270,000

Freehold

2x  1x  2x 

**Clive Road, Rochester,
Kent, ME1**

OVER 60?

Secure this property
for up to **59% less!**

Wards
Helping you move forwards



Main features

- Period property with an abundance of character features
- Useful loft room
- Located off one of Rochester's most prestigious roads
- Catchment area for top performing schools
- Close to historic High Street with high speed train station

Accommodation

SPLIT LEVEL GROUND FLOOR

Lounge: 13'2 x 10'9 (4.02m x 3.28m)
 Dining Area: 13'2 x 11'10 (4.02m x 3.61m)
 Kitchen: 9'9 x 6'9 (2.97m x 2.06m)
 Lean-to

SPLIT LEVEL FIRST FLOOR

Landing
 Bedroom 1: 12'0 x 10'9 (3.66m x 3.28m)
 Bedroom 2: 12'0 x 8'7 (3.66m x 2.62m)
 Bathroom: 9'9 x 6'9 (2.97m x 2.06m)

SECOND FLOOR

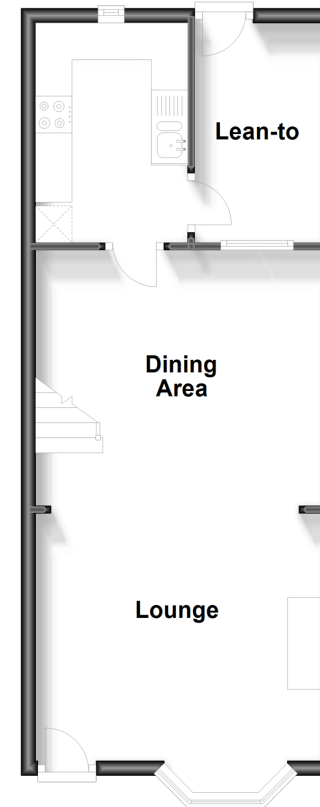
Loft Room: 14'6 x 13'2 (4.42m x 4.02m)

OUTSIDE

Rear Garden

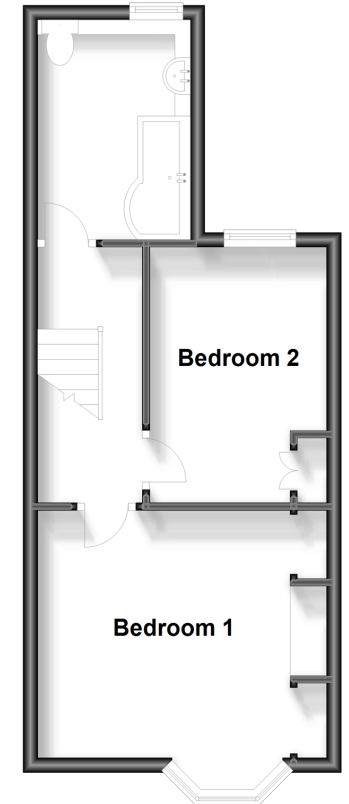
Split Level Ground Floor

Approx. 40.0 sq. metres (430.6 sq. feet)



Split Level First Floor

Approx. 34.2 sq. metres (368.0 sq. feet)



Call Rochester - 01634 830925 ■ wardsofkent.co.uk

- Legal advice should be taken to verify fixtures/fittings, planning, alterations and/or lease details
- Appliances & services are untested, dimensions are approximate and floor plans are not to scale
- Through a Homewise Home For Life Plan people aged 60+ can secure this property for up to 59% less, by purchasing a Lifetime Lease.



11529529/20231130/DG/DM