



**Price**  
**£950,000**

**Freehold**

4x  2x  2x 

**Eden Mews, Crow Lane,  
Rochester, Kent, ME1**

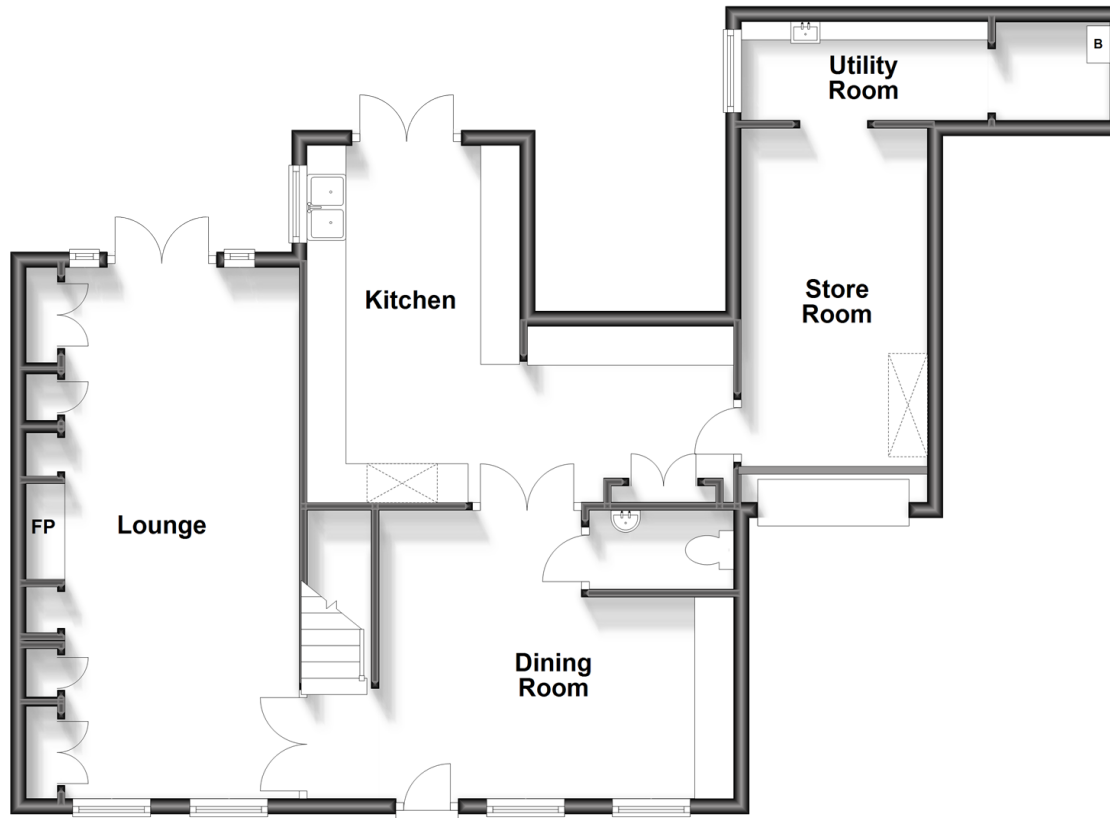
**OVER 60?**

Secure this property  
for up to **59% less!**

*Wards*  
Helping you move forwards

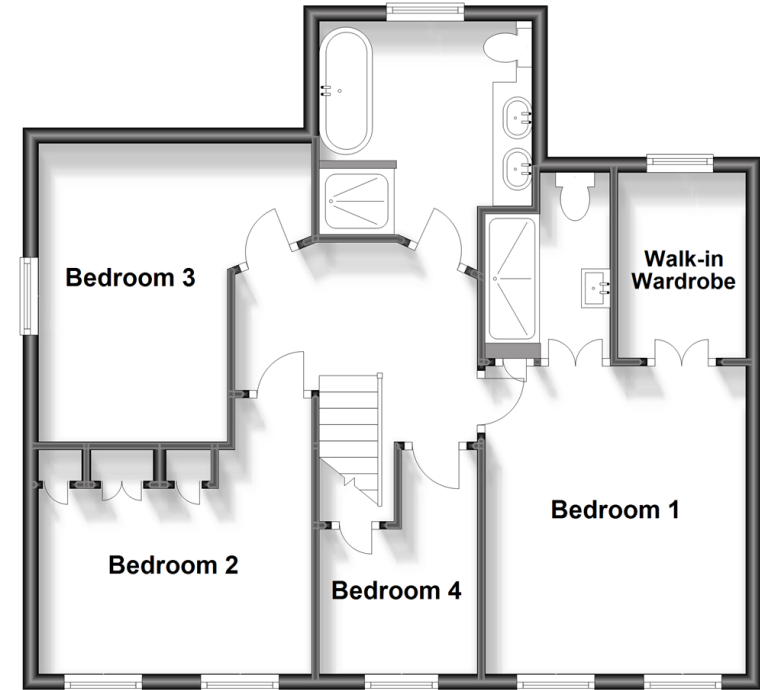
## Ground Floor

Approx. 82.3 sq. metres (885.8 sq. feet)



## First Floor

Approx. 65.4 sq. metres (703.4 sq. feet)



## Accommodation

### GROUND FLOOR

Entrance Hall  
 Cloakroom: 4'8 x 3'8 (1.42m x 1.12m)  
 Lounge: 21'9 x 11'6 (6.63m x 3.51m)  
 Dining Room: 15'2 x 14'2 (4.63m x 4.32m)  
 Kitchen: 18'8 x 7'1 (5.69m x 2.16m)  
 Store Room: 16'0 x 7'9 (4.88m x 2.36m)  
 Utility Room: 10'5 x 4'0 (3.18m x 1.22m)

### FIRST FLOOR

Landing  
 Bedroom 1: 12'7 x 11'6 (3.84m x 3.51m)  
 Walk-in Wardrobe: 8'4 x 4'10 (2.54m x 1.47m)  
 En-suite Shower Room: 7'5 x 5'6 (2.26m x 1.68m)  
 Bedroom 2: 12'7 x 11'8 (3.84m x 3.56m)  
 Bedroom 3: 10'10 x 9'9 (3.30m x 2.97m)  
 Bedroom 4: 8'11 x 7'6 (2.72m x 2.29m)  
 Bathroom: 8'10 x 8'9 (2.69m x 2.67m)

### OUTSIDE

Rear Courtyard  
 Garage and Off-road Parking





## Main features

- Immaculately presented throughout!
- Secure gated off-road parking
- High spec kitchen with integral appliances and underfloor heating
- Courtyard garden
- 2 minute walk to historic cobbled High Street with high speed station



### Nearest Schools

Primary Schools: St Margaret's at Troy Town CofE Voluntary Controlled Primary 0.3 miles

Secondary Schools: King's School, Rochester 0.3 miles



### Transport Information

Train Stations: Rochester 0.2 miles, Strood 0.8 miles, Chatham 1.0 mile



### Address

Eden Mews, Crow Lane, Rochester, Kent, ME1



### Directions

For directions to this property please contact us.





*Wards*  
Helping you move forwards

Call Rochester Branch 01634 830925 ■ [wardsofkent.co.uk](https://wardsofkent.co.uk)



■ Legal advice should be taken to verify fixtures/fittings, planning, alterations and/or lease details ■ Appliances & services are untested, dimensions are approximate and floor plans are not to scale  
■ Through a Homewise Home For Life Plan people aged 60+ can secure this property for up to 59% less, by purchasing a Lifetime Lease.



11529612/20231030/DG/AB