



OVER 60?

Secure this property
for up to **59% less!**

Price

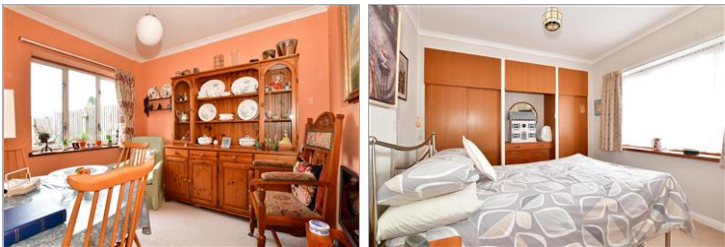
£280,000

Freehold

2x  1x  2x 

**Green Close, Rochester,
Rochester, Kent, ME1**

Wards
Helping you move forwards



Main features

- **Fantastic first time buy or investment opportunity**
- **In need of minor modernisation**
- **Separate dining room**
- **Upstairs bathroom**
- **Walking distance to local shops, bus routes and great schools**

Accommodation

GROUND FLOOR

Porch
Hallway
Lounge: 13'3 x 12'2 (4.04m x 3.71m)
Kitchen: 10'3 x 7'10 (3.13m x 2.39m)
Dining Room: 9'10 x 8'8 (3.00m x 2.64m)

FIRST FLOOR

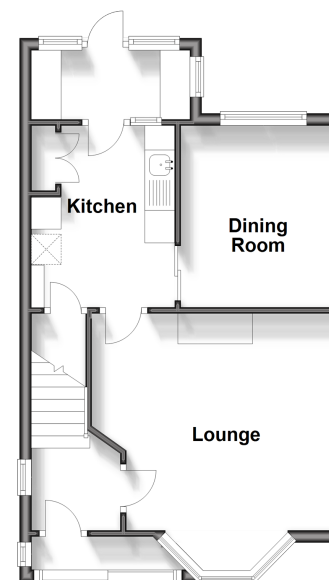
Landing
Bedroom 1: 13'5 x 9'9 (4.09m x 2.97m)
Bedroom 2: 10'6 x 10'1 (3.20m x 3.08m)
Bathroom

OUTSIDE

Front and Rear Garden

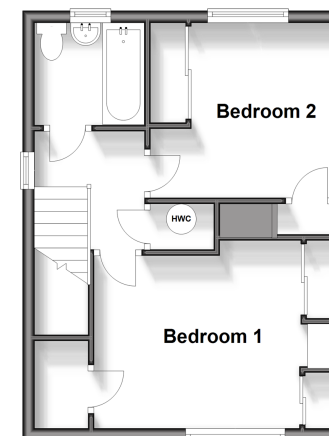
Ground Floor

Approx. 39.1 sq. metres (420.7 sq. feet)



First Floor

Approx. 34.0 sq. metres (366.4 sq. feet)



Call Rochester - 01634 830925 ■ wardsofkent.co.uk

- Legal advice should be taken to verify fixtures/fittings, planning, alterations and/or lease details
- Appliances & services are untested, dimensions are approximate and floor plans are not to scale
- Through a Homewise Home For Life Plan people aged 60+ can secure this property for up to 59% less, by purchasing a Lifetime Lease.



11529639/20240320/AB/NW