



**Price**  
**£325,000**

**Leasehold**

2x  2x  1x 

**Corys Road, Rochester,  
Kent, ME1**

**OVER 60?**

Secure this property  
for up to **59% less!**

*Wards*  
Helping you move forwards





## Main features

- **Waterfront apartment with spectacular panoramic views**
- **Sold chain free**
- **Balcony and allocated parking**
- **Located minutes away from Historic High Street and station with high speed rail services into London**
- **Perfect for first time buyers and investors alike**

## Accommodation

### FOURTH FLOOR

Entrance Hall

Kitchen/Lounge/Dining Area: 18'3 x 17'5  
(5.57m x 5.31m)

Bedroom 1: 13'10 x 9'0 (4.22m x 2.75m)

En-suite Shower Room

Bedroom 2: 13'1 x 11'0 (3.99m x 3.36m)

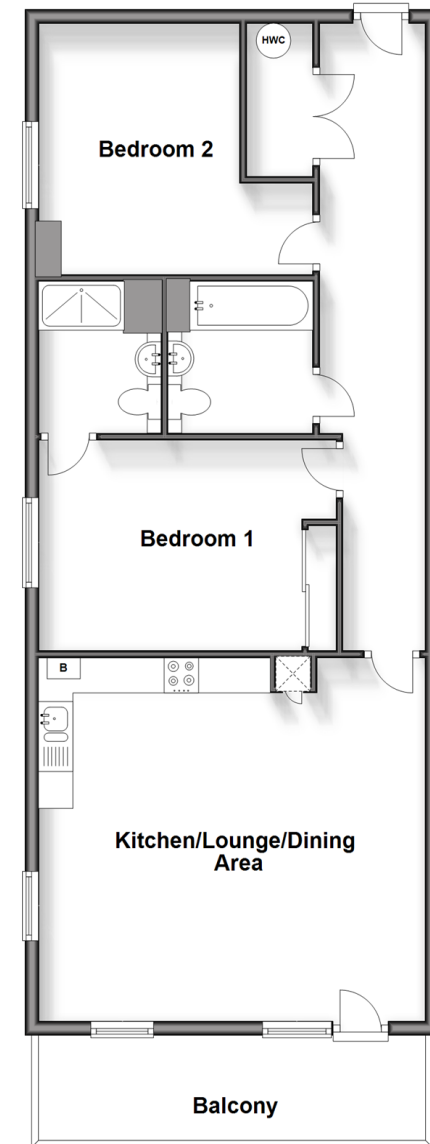
Bathroom

OUTSIDE

Balcony

Allocated Parking

### Fourth Floor Approx. 80.1 sq. metres (862.7 sq. feet)



**Call Rochester - 01634 830925 ■ [wardsofkent.co.uk](http://wardsofkent.co.uk)**

- Legal advice should be taken to verify fixtures/fittings, planning, alterations and/or lease details
- Appliances & services are untested, dimensions are approximate and floor plans are not to scale
- Through a Homewise Home For Life Plan people aged 60+ can secure this property for up to 59% less, by purchasing a Lifetime Lease.



11529642/20240306/AB/AB