



OVER 60?

Secure this property
for up to **59% less!**

Price

£200,000

Leasehold

1x  1x  1x 

**Bishops Court, St.
Bartholomews Place,
New Road, Rochester,
Kent, ME1**

Wards
Helping you move forwards



Main features

- Beautifully restored building with period features and panoramic views
- Ideal first time buy or investment opportunity
- Allocated parking with bike store
- Short walk to historic High Street with high speed station
- River facing and sold chain free

Accommodation

SECOND FLOOR

Hallway

Lounge/Kitchen/Diner: 17'10 x 9'10 (5.44m x 3.00m)

Bedroom: 14'8 at widest point x 14'0 at widest point (4.47m x 4.27m)

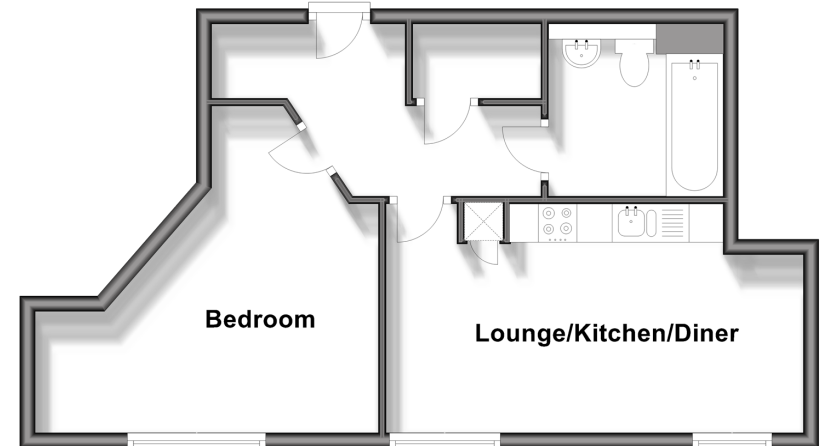
Bathroom

OUTSIDE

Allocated Parking

Second Floor

Approx. 42.7 sq. metres (459.9 sq. feet)



Call Rochester - 01634 830925 ■ wardsofkent.co.uk

■ Legal advice should be taken to verify fixtures/fittings, planning, alterations and/or lease details
 ■ Through a Homewise Home For Life Plan people aged 60+ can secure this property for up to 59% less, by purchasing a Lifetime Lease.

■ Appliances & services are untested, dimensions are approximate and floor plans are not to scale