



Price
£365,000

Freehold

3x  2x  2x 

**Hall Road, Wouldham,
Rochester, Kent, ME1**

Wards
Helping you move forwards



Main features

- Located in a picturesque village location
- Immaculately presented throughout
- Perfect first time buy
- Allocated parking
- Riverside and countryside walks on your door step

Accommodation

GROUND FLOOR

Hallway
Kitchen: 12'0 x 8'2 (3.66m x 2.49m)
Cloakroom
Dining Room: 12'8 x 12'0 (3.86m x 3.66m)

FIRST FLOOR

Landing
Bedroom 1: 12'0 x 9'3 (3.66m x 2.82m)
En-suite Shower Room
Lounge: 12'2 x 12'0 (3.71m x 3.66m)
Balcony

SECOND FLOOR

Landing
Bedroom 2: 12'2 x 12'0 (3.71m x 3.66m)
Bedroom 3: 12'0 x 8'8 (3.66m x 2.64m)
Bathroom

OUTSIDE

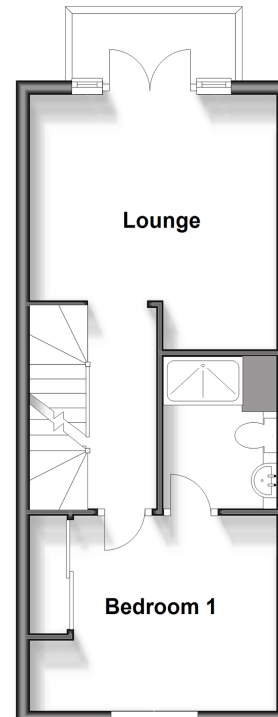
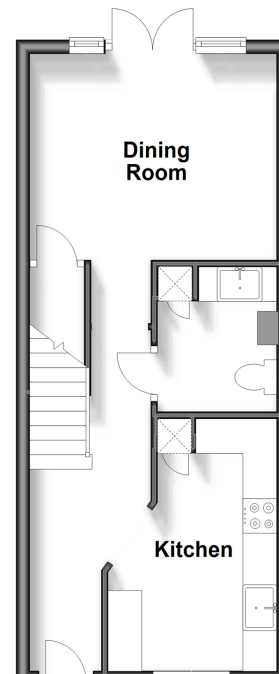
Front and Rear Garden
Allocated Parking

First Floor

Approx. 32.7 sq. metres (351.9 sq. feet)

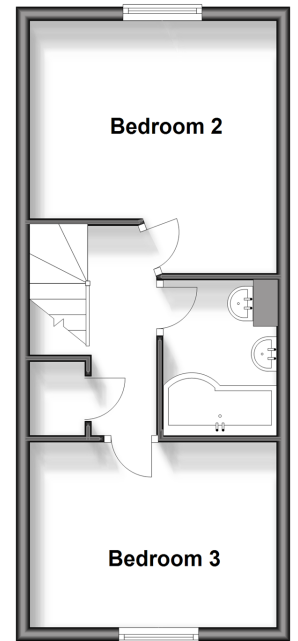
Ground Floor

Approx. 32.7 sq. metres (351.9 sq. feet)



Second Floor

Approx. 32.1 sq. metres (345.7 sq. feet)



Call Rochester - 01634 830925 ■ wardsofkent.co.uk

■ Legal advice should be taken to verify fixtures/fittings, planning, alterations and/or lease details

■ Appliances & services are untested, dimensions are approximate and floor plans are not to scale



11529678/20240221/DG/AB