



**Price**  
**£350,000**

**Freehold**

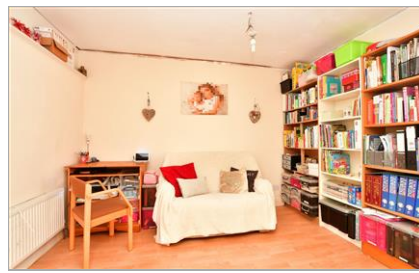
3x  1x  2x 

**Carpenters Close,  
Rochester, Kent, ME1**

**OVER 60?**

Secure this property  
for up to **59% less!**

*Wards*  
Helping you move forwards



## Main features

- Perfect for first time buyers
- 3 storey house with home office space created by removal of garage
- Off-road parking in a cul de sac location
- Sold chain free
- Close to historic High Street with high speed station

## Accommodation

### GROUND FLOOR

Hallway  
Cloakroom: 4'10 x 3'10 (1.47m x 1.17m)  
Kitchen/Diner: 13'10 x 11'4 (4.22m x 3.46m)  
Home Office: 17'1 x 11'4 (5.21m x 3.46m)

### LOWER GROUND FLOOR

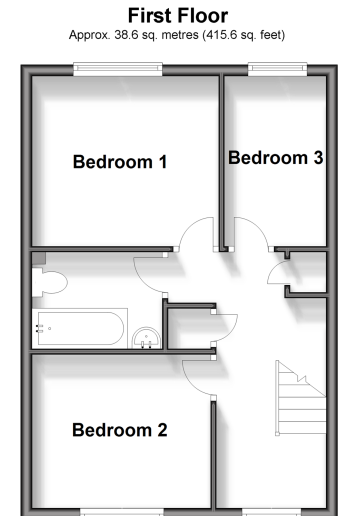
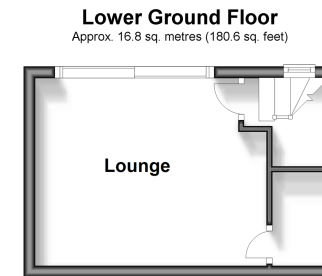
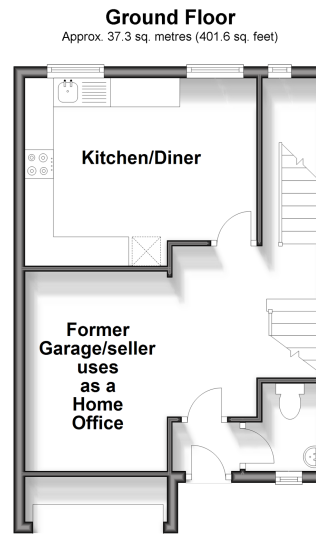
Hallway  
Lounge: 13'5 x 10'9 (4.09m x 3.28m)

### FIRST FLOOR

Landing  
Bedroom 1: 10'8 x 9'8 (3.25m x 2.95m)  
Bedroom 2: 10'6 x 8'10 (3.20m x 2.69m)  
Bedroom 3: 9'8 x 6'1 (2.95m x 1.86m)  
Bathroom: 7'9 x 5'4 (2.36m x 1.63m)

### OUTSIDE

Off-road Parking  
Rear Garden



Call Rochester - 01634 830925 ■ [wardsofkent.co.uk](http://wardsofkent.co.uk)

■ Legal advice should be taken to verify fixtures/fittings, planning, alterations and/or lease details  
■ Through a Homewise Home For Life Plan people aged 60+ can secure this property for up to 59% less, by purchasing a Lifetime Lease.

■ Appliances & services are untested, dimensions are approximate and floor plans are not to scale