



**Price**  
**£240,000**  
**Leasehold**

1x  1x  1x 

Pullman House, Corporation Street,  
Rochester, Kent, ME1

*Wards*  
Helping you move forwards



## Main features

- Contemporary fitted kitchen by Howdens with integrated appliances
- White contemporary bathroom suite with chrome fittings
- Private terrace to extend the living area
- Spacious living areas with room to work-from-home or spend quality time

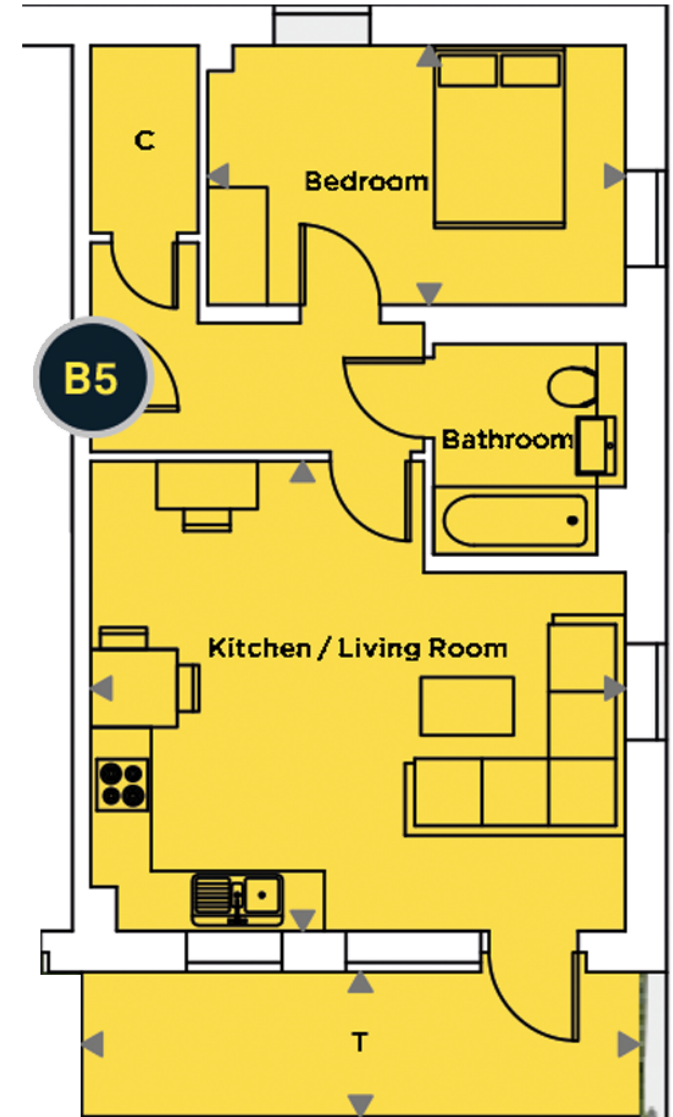
## Accommodation

### FIRST FLOOR

Entrance Hall  
 Kitchen/Lounge: 18'2 x 16'0 (5.54m x 4.88m)  
 Bedroom 1: 14'2 x 8'8 (4.32m x 2.64m)  
 Bathroom

### OUTSIDE

Terrace  
 Communal Garden



**Call Rochester - 01634 830925 ■ [wardsofkent.co.uk](http://wardsofkent.co.uk)**

- If buying to let, the energy rating will need to be improved to at least 'E' rating before you can let the property
- Legal advice should be taken to verify fixtures/fittings, planning, alterations and/or lease details
- Appliances & services are untested, dimensions are approximate and floor plans are not to scale



11529694/20240202/LM/AB