



Price

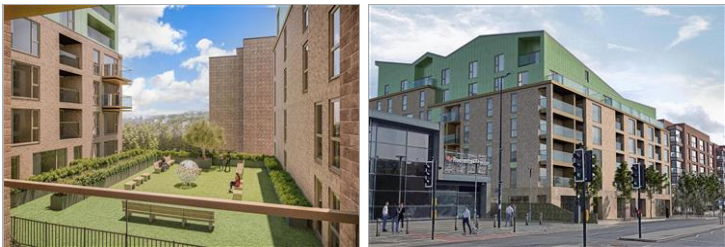
£280,000

Leasehold

2x  2x  1x 

**Pullman House, Corporation Street,
Rochester, Kent, ME1**

Wards
Helping you move forwards



Main features

- Contemporary fitted kitchen by Howdens with integrated appliances
- White modern bathroom suite with tiling to floors and wet areas
- Spacious living area with room to WFH and a private terrace
- Communal first floor courtyard garden provides further outside space

Accommodation

SECOND FLOOR

Hallway

Kitchen/Lounge/Diner: 17'4 x 16'2 (5.29m x 4.93m)

Main Bedroom: 10'5 x 10'2 (3.18m x 3.10m)

En Suite Shower Room

Bedroom 2: 10'2 x 6'5 (3.10m x 1.96m)

Bathroom

OUTSIDE

Private Terrace: 16'5 x 5'2 (5.01m x 1.58m)

Bedroom Terrace: 4'6 x 4'6 (1.37m x 1.37m)

Communal Courtyard Garden



Call Rochester - 01634 830925 ■ wardsofkent.co.uk

- If buying to let, the energy rating will need to be improved to at least 'E' rating before you can let the property
- Legal advice should be taken to verify fixtures/fittings, planning, alterations and/or lease details
- Appliances & services are untested, dimensions are approximate and floor plans are not to scale



11529709/20240221/DG/AB