



Price

£220,000

Leasehold

1x  1x  1x 

**Pullman House, Corporation Street,
Rochester, Kent, ME1**

Wards
Helping you move forwards



Main features

- Contemporary fitted kitchen by Howdens with built-in appliances
- Modern white bathroom suite with tiling to floors and wet areas
- Spacious living areas with room to WFH and a private terrace
- Communal first floor courtyard garden provides further outside space

Accommodation

FIRST FLOOR

Kitchen/Lounge/Diner: 25'5 x 10'7 (7.75m x 3.23m)

Bedroom: 12'9 x 10'1 (3.89m x 3.08m)

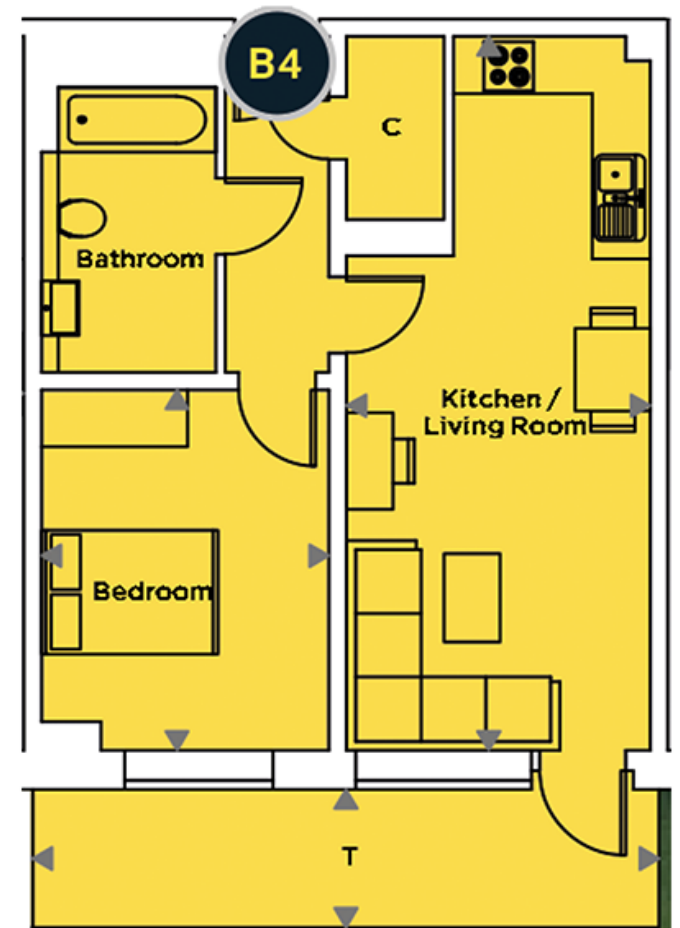
Bathroom

Hallway

OUTSIDE

Private Terrace: 22'1 x 4'9 (6.74m x 1.45m)

Communal Courtyard Garden



Call Rochester - 01634 830925 ■ wardsof Kent.co.uk

- If buying to let, the energy rating will need to be improved to at least 'E' rating before you can let the property
- Legal advice should be taken to verify fixtures/fittings, planning, alterations and/or lease details
- Appliances & services are untested, dimensions are approximate and floor plans are not to scale



11529710/20240422/SE/AB