



**Price**  
**£200,000**

**Leasehold**

1x  1x  1x 

**St. Bartholomew's Place,  
New Road, Rochester,  
Kent, ME1**

**OVER 60?**

Secure this property  
for up to **59% less!**

*Wards*  
Helping you move forwards





## Main features

- **First floor apartment located in a beautifully restored period building**
- **Perfect first time buy!**
- **Allocated parking**
- **Located minutes away from historic High Street**
- **Communal terrace and bike store**

## Accommodation

### FIRST FLOOR

Landing

Kitchen/Living Area: 15'3 x 10'11 (4.65m x 3.33m)

Bedroom : 11'11 x 10'7 (3.63m x 3.23m)

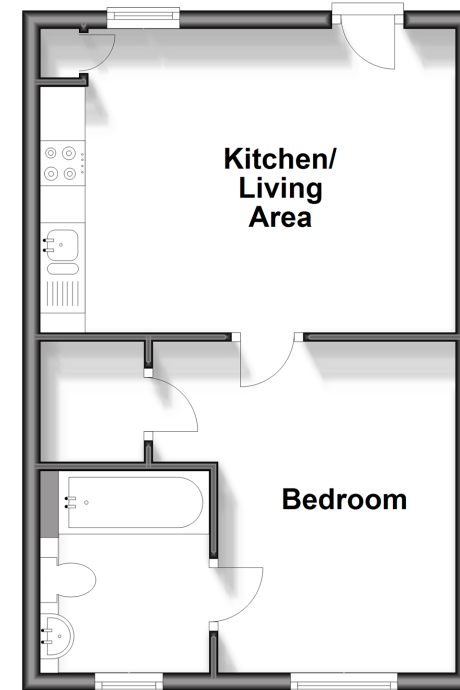
En- suite Bathroom: 7'4 x 6'3 (2.24m x 1.91m)

### OUTSIDE

Allocated Parking

## First Floor

Approx. 33.1 sq. metres (356.4 sq. feet)



**Call Rochester - 01634 830925 ■ [wardsofkent.co.uk](http://wardsofkent.co.uk)**

- If buying to let, the energy rating will need to be improved to at least 'E' rating before you can let the property
- Appliances & services are untested, dimensions are approximate and floor plans are not to scale

- Legal advice should be taken to verify fixtures/fittings, planning, alterations and/or lease details
- Through a Homewise Home For Life Plan people aged 60+ can secure this property for up to 59% less, by purchasing a Lifetime Lease.



11529713/20240328/DG/AB