



**OVER 60?**

Secure this property  
for up to **59% less!**

**Price**  
**£300,000**

**Freehold**

2x  1x  1x 

**Hawser Road,  
Rochester, Kent, ME1**

*Wards*  
Helping you move forwards





## Main features

- Perfect for first time buyers looking to get on the property ladder
- Immaculately presented throughout
- Upstairs bathroom
- Landscaped rear garden
- Close to great schools, shops and local amenities

## Accommodation

### GROUND FLOOR

Hallway

Lounge: 14'4 x 13'0 (4.37m x 3.97m)

Dining Room: 9'9 x 8'3 (2.97m x 2.52m)

Kitchen: 9'9 x 7'6 (2.97m x 2.29m)

Utility Room: 5'11 x 5'8 (1.80m x 1.73m)

### FIRST FLOOR

Landing

Bedroom 1: 13'1 x 9'6 (3.99m x 2.90m)

Bedroom 2: 9'10 x 9'10 (3.00m x 3.00m)

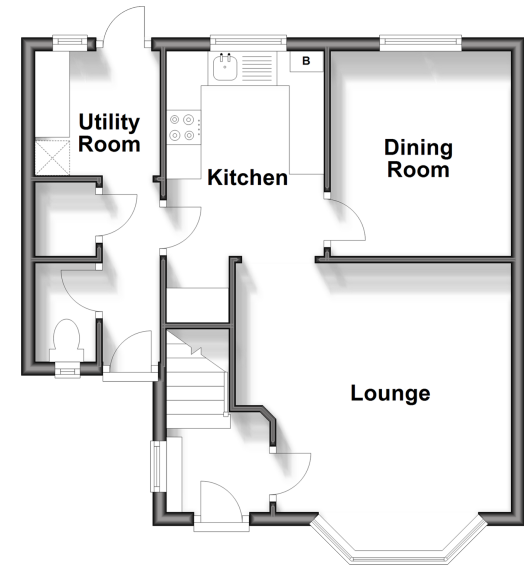
Bathroom

### OUTSIDE

Front and Rear Garden

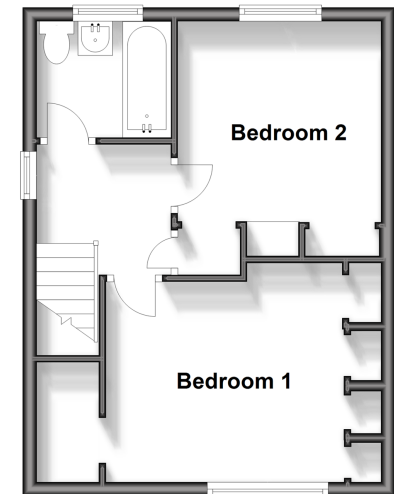
### Ground Floor

Approx. 42.2 sq. metres (454.5 sq. feet)



### First Floor

Approx. 33.3 sq. metres (358.6 sq. feet)



**Call Rochester - 01634 830925 ■ [wardsofkent.co.uk](http://wardsofkent.co.uk)**

- Legal advice should be taken to verify fixtures/fittings, planning, alterations and/or lease details
- Appliances & services are untested, dimensions are approximate and floor plans are not to scale
- Through a Homewise Home For Life Plan people aged 60+ can secure this property for up to 59% less, by purchasing a Lifetime Lease.



11529716/20240410/DG/AB