



OVER 60?

Secure this property
for up to **59% less!**

Price

£490,000

Freehold

4x  3x  2x 

**Gun Tower Mews,
Rochester, Kent, ME1**

Wards
Helping you move forwards



Main features

- Deceptively large family home
- Two en-suites as well as a dressing area to bedroom 1
- Garage and off-road parking to the rear
- Walking distance to historic High Street with high speed station
- Offered with no forward chain

Accommodation

GROUND FLOOR

Hallway
Cloakroom
Kitchen/Breakfast Room: 16'1 x 13'6 (4.91m x 4.12m)
Dining Room: 12'10 x 8'10 (3.91m x 2.69m)

FIRST FLOOR

Landing
Lounge: 16'2 x 15'2 (4.93m x 4.63m)
Bedroom 2: 16'4 x 11'5 (4.98m x 3.48m)
En-suite Bathroom: 7'8 x 5'5 (2.34m x 1.65m)

SECOND FLOOR

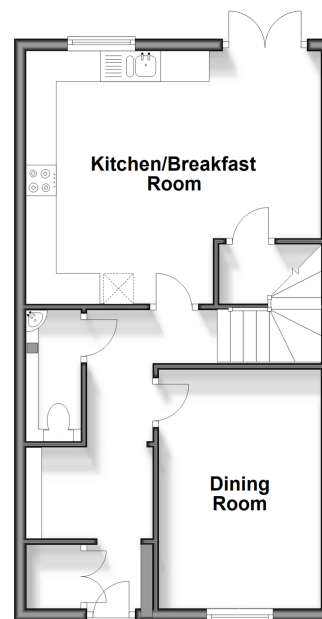
Landing
Bedroom 1: 14'10 x 10'0 (4.52m x 3.05m)
En-Suite Shower Room: 7'11 x 6'1 (2.41m x 1.86m)
Dressing Area: 6'4 x 4'7 (1.93m x 1.40m)
Bedroom 3: 8'9 x 8'2 (2.67m x 2.49m)
Bedroom 4: 8'1 x 7'3 (2.47m x 2.21m)
Bathroom: 6'7 x 6'5 (2.01m x 1.96m)

OUTSIDE

Front and Rear Garden
Garage and Off-Road Parking

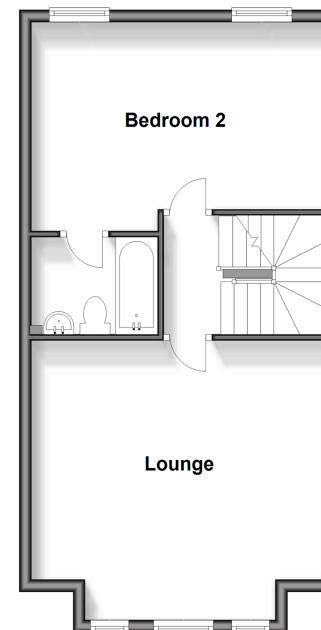
Ground Floor

Approx. 44.6 sq. metres (480.0 sq. feet)



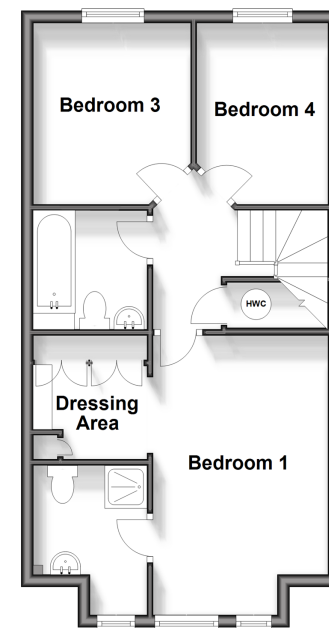
First Floor

Approx. 46.7 sq. metres (502.5 sq. feet)



Second Floor

Approx. 46.2 sq. metres (497.6 sq. feet)



Call Rochester - 01634 830925 ■ wardsofkent.co.uk

■ Legal advice should be taken to verify fixtures/fittings, planning, alterations and/or lease details
■ Through a Homewise Home For Life Plan people aged 60+ can secure this property for up to 59% less, by purchasing a Lifetime Lease.

■ Appliances & services are untested, dimensions are approximate and floor plans are not to scale



11529717/20240402/DG/NW