



Price
£300,000

Leasehold

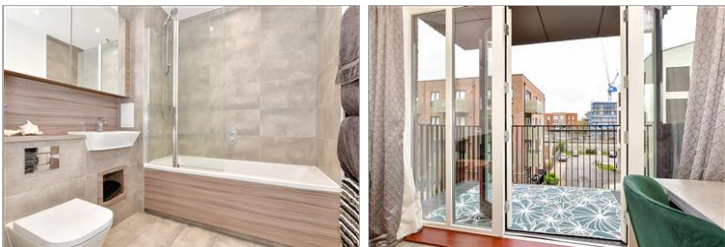
2x  1x  1x 

**Corys Road, Rochester,
Kent, ME1**

OVER 60?

Secure this property
for up to **59% less!**

Wards
Helping you move forwards



Main features

- Immaculately presented and situated on Rochester Riverside
- Offered for sale with no forward chain
- A stone's throw to Rochester train station with high speed links
- Walking distance to historic High Street with restaurants, coffee shops and boutiques

Accommodation

SECOND FLOOR

Hallway

Lounge/Kitchen/Diner: 20'7 x 13'6 (6.28m x 4.12m)

Balcony

Bedroom 1: 13'9 x 9'9 (4.19m x 2.97m)

Bedroom 2: 10'9 x 9'9 (3.28m x 2.97m)

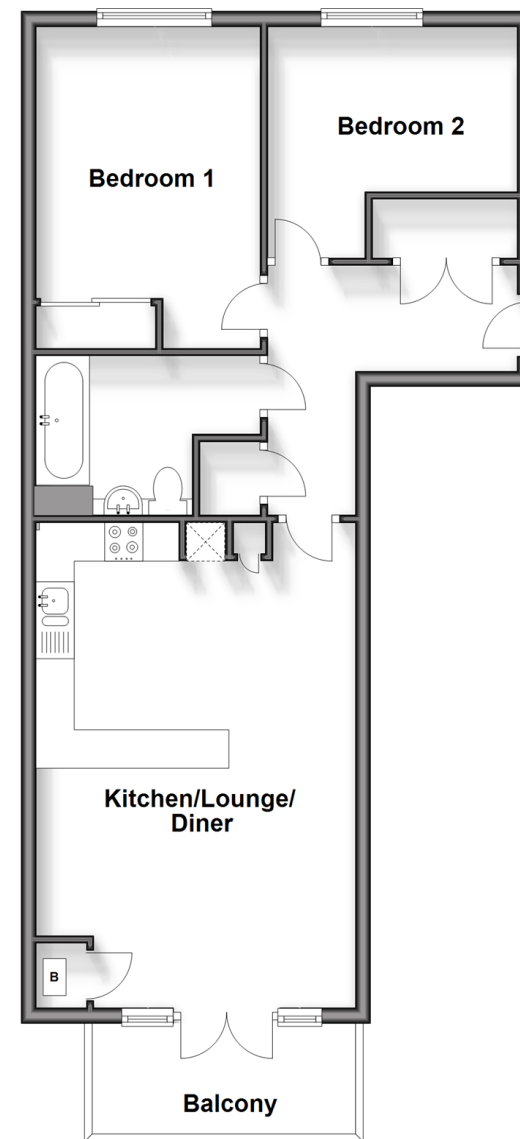
Bathroom: 9'6 x 6'10 (2.90m x 2.08m)

OUTSIDE

Allocated Parking

Second Floor

Approx. 62.8 sq. metres (675.6 sq. feet)



Call Rochester - 01634 830925 ■ wardsofkent.co.uk

- Legal advice should be taken to verify fixtures/fittings, planning, alterations and/or lease details
- Appliances & services are untested, dimensions are approximate and floor plans are not to scale
- Through a Homewise Home For Life Plan people aged 60+ can secure this property for up to 59% less, by purchasing a Lifetime Lease.



11529718/20240424/DG/NW