



**Price**

**£230,000**

**Leasehold**

1x  1x  1x 

**Limehouse Wharf,  
Rochester, Kent, ME1**

**OVER 60?**

Secure this property  
for up to **59% less!**

*Wards*  
Helping you move forwards





## Main features

- Perfect first time buy
- Suitable for investors looking to add to their portfolio
- Balcony with panoramic views
- Allocated parking
- Minutes away from high speed train station and historic High Street

## Accommodation

### TOP FLOOR

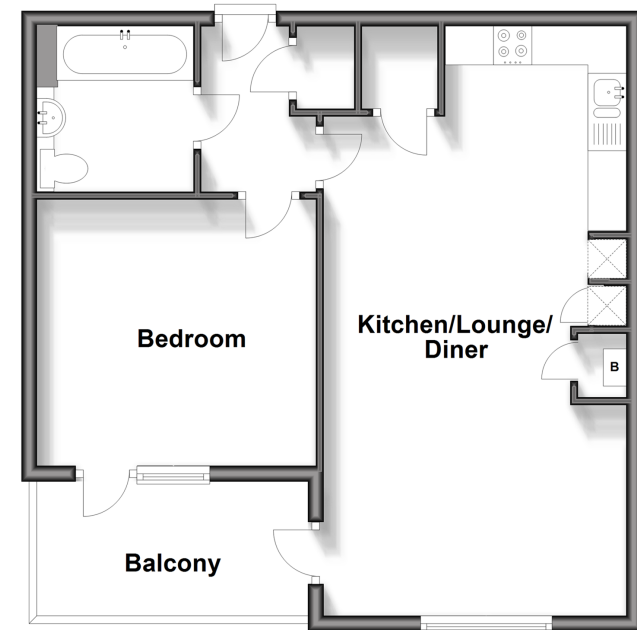
Hallway  
 Kitchen/Lounge/Diner: 25'2 x 13'0 (7.68m x 3.97m)  
 Balcony  
 Bedroom: 12'3 x 11'8 (3.74m x 3.56m)  
 Balcony  
 Bathroom: 6'10 x 6'9 (2.08m x 2.06m)

### OUTSIDE

Allocated Parking

### Fifth Floor

Approx. 51.2 sq. metres (551.6 sq. feet)



**Call Rochester - 01634 830925 ■ [wardsofkent.co.uk](http://wardsofkent.co.uk)**

■ Legal advice should be taken to verify fixtures/fittings, planning, alterations and/or lease details  
 ■ Through a Homewise Home For Life Plan people aged 60+ can secure this property for up to 59% less, by purchasing a Lifetime Lease.

■ Appliances & services are untested, dimensions are approximate and floor plans are not to scale