



Price

£230,000

Leasehold

1x  1x  1x 

**Pullman House,
Corporation Street,
Rochester, Kent, ME1**

Wards
Helping you move forwards



Main features

- Contemporary fitted kitchen by Howdens with integrated appliances
- White contemporary bathroom suite with tiling to floors and wet areas
- Private terrace to extend the living area
- Spacious living areas with room to WFH or spend quality time

Accommodation

FIRST FLOOR

Kitchen/Living Room: 18'5 x 13'9 (5.62m x 4.19m)

Bedroom: 13'2 x 10'1 (4.02m x 3.08m)

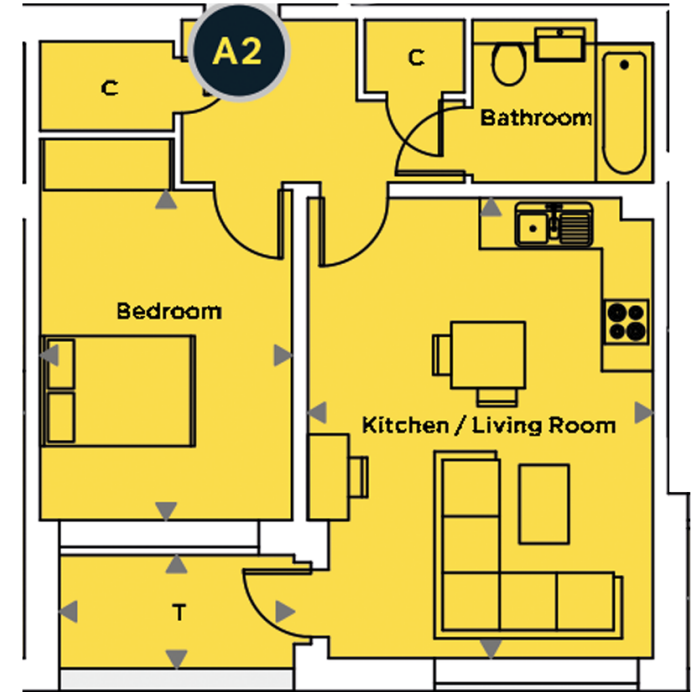
Bathroom

Hallway

OUTSIDE

Private Terrace: 9'4 x 4'5 (2.85m x 1.35m)

Communal Roof Terrace



Call Rochester - 01634 830925 ■ wardsofkent.co.uk

- If buying to let, the energy rating will need to be improved to at least 'E' rating before you can let the property
- Legal advice should be taken to verify fixtures/fittings, planning, alterations and/or lease details
- Appliances & services are untested, dimensions are approximate and floor plans are not to scale



11529731/20240326/DG/AB