



Price

£295,000

Leasehold

2x  1x  1x 

**Pullman House,
Corporation Street,
Rochester, Kent, ME1**

Wards
Helping you move forwards



Main features

- Contemporary fitted kitchen by Howdens with integrated appliances
- White contemporary bathroom suite with tiling to floors and wet areas
- Private terrace to extend the living area
- Spacious living areas with room to WFH or spend quality time

Accommodation

SECOND FLOOR

Hallway

Kitchen/Living Room: 21'2 x 12'6 (6.46m x 3.81m)

Bedroom 1: 12'4 x 11'5 (3.76m x 3.48m)

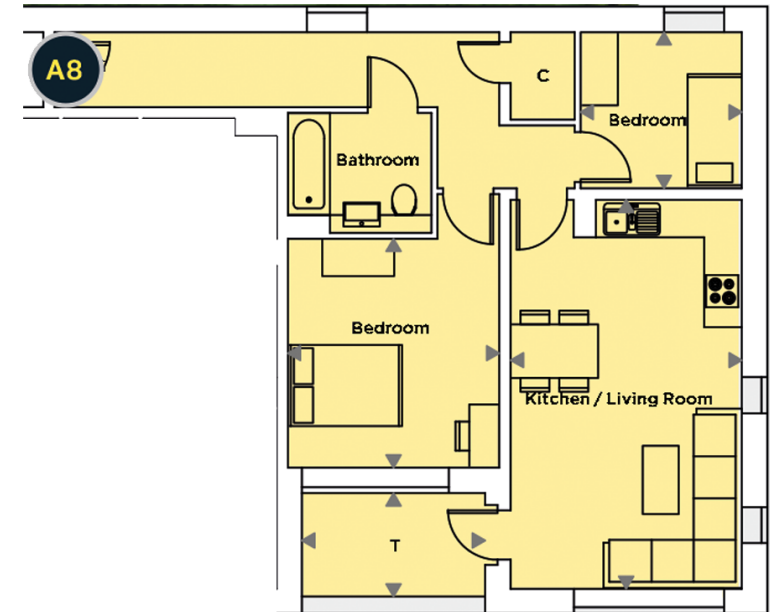
Bedroom 2: 8'8 x 8'5 (2.64m x 2.57m)

Bathroom

OUTSIDE

Private Terrace: 9'10 x 5'6 (3.00m x 1.68m)

Communal Roof Terrace



Call Rochester - 01634 830925 ■ wardsofkent.co.uk

- If buying to let, the energy rating will need to be improved to at least 'E' rating before you can let the property
- Legal advice should be taken to verify fixtures/fittings, planning, alterations and/or lease details
- Appliances & services are untested, dimensions are approximate and floor plans are not to scale



11529732/20240326/DG/AB