



Price
£350,000

Freehold

2x  1x  1x 

**Orchid Road,
Wouldham, Rochester,
Kent, ME1**

OVER 60?

Secure this property
for up to **59% less!**

Wards
Helping you move forwards



Main features

- Beautifully presented house overlooking the nature reserve
- Nestled in the heart of the picturesque Peters Village
- Off-road parking for 2 cars
- Walking distance to primary school
- Great for commuter links to M2/M20/A2

Accommodation

GROUND FLOOR

Hallway
Cloakroom
Kitchen: 10'11 x 7'4 (3.33m x 2.24m)
Lounge/Diner: 14'2 x 11'11 (4.32m x 3.63m)

FIRST FLOOR

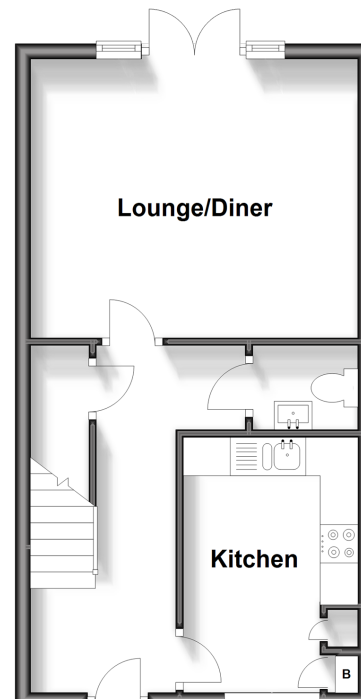
Landing
Bedroom 1: 13'4 x 10'9 (4.07m x 3.28m)
Bedroom 2: 12'3 x 9'2 (3.74m x 2.80m)
Bathroom

OUTSIDE

Rear Garden
Off-Road Parking for 2 cars

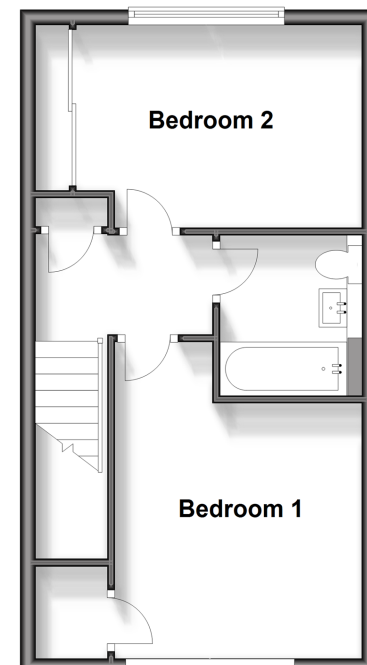
Ground Floor

Approx. 35.8 sq. metres (385.8 sq. feet)



First Floor

Approx. 35.8 sq. metres (385.8 sq. feet)



Call Rochester - 01634 830925 ■ wardsofkent.co.uk

■ Legal advice should be taken to verify fixtures/fittings, planning, alterations and/or lease details
■ Through a Homewise Home For Life Plan people aged 60+ can secure this property for up to 59% less, by purchasing a Lifetime Lease.

■ Appliances & services are untested, dimensions are approximate and floor plans are not to scale



11529739/20240415/DG/NW