



OVER 60?

Secure this property
for up to **59% less!**

Price

£200,000

Freehold

3x  1x  2x 

**Invicta Road, Sheerness,
Kent, ME12**

Wards
Helping you move forwards



Main features

- Ready to move into, a perfect first time buy or buy to let
- Take a stroll down to the end of the road to the Blue Flag beach
- Only a brisk walk to the High Street and railway station
- A lovely kitchen which includes a built-in oven and hob
- All Bedrooms Separate upstairs

Accommodation

SPLIT LEVEL GROUND FLOOR

Lounge : 14'0 x 13'3 (4.27m x 4.04m)
 Dining Room : 13'2 x 11'1 (4.02m x 3.38m)
 Kitchen : 14'11 x 7'6 (4.55m x 2.29m)
 Inner Lobby
 Bathroom: 10'0 (3.05m) narrowing to 6'11 (2.11m) x 8'10 (2.69m)

SPLIT LEVEL FIRST FLOOR

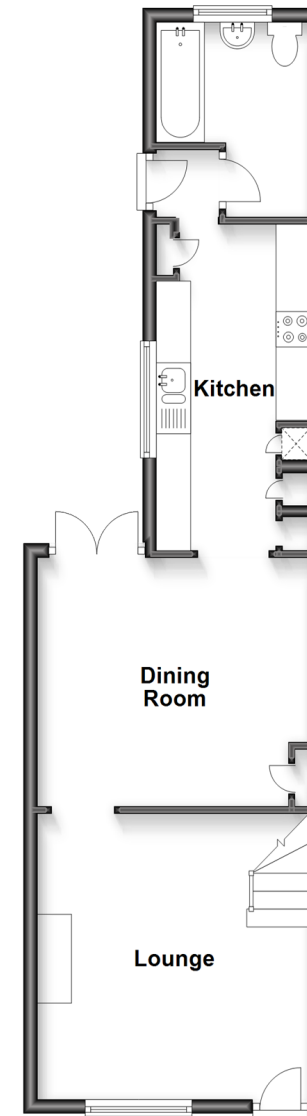
Bedroom 1 : 13'5 x 11'2 (4.09m x 3.41m)
 Bedroom 2: 14'11 x 7'3 (4.55m x 2.21m)
 Bedroom 3: 9'1 x 7'10 (2.77m x 2.39m)

OUTSIDE

Rear Courtyard Garden

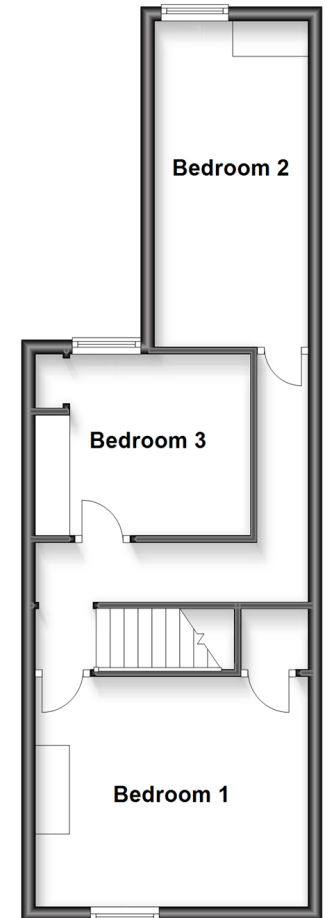
Split Level Ground Floor

Approx. 47.3 sq. metres (509.3 sq. feet)



Split Level First Floor

Approx. 41.6 sq. metres (447.3 sq. feet)



Call Sheerness - 01795 664651 ■ wardsofkent.co.uk

- Legal advice should be taken to verify fixtures/fittings, planning, alterations and/or lease details
- Appliances & services are untested, dimensions are approximate and floor plans are not to scale
- Through a Homewise Home For Life Plan people aged 60+ can secure this property for up to 59% less, by purchasing a Lifetime Lease.



11623714/20230412/PA/PA