



OVER 60?

Secure this property
for up to **59% less!**

Price

£250,000

Freehold

3x  1x  1x 

**Furze Hill Crescent,
Halfway, Kent, ME12**

Wards
Helping you move forwards



Main features

- Desirable location with good links off the island
- Off road parking to the front
- Handy breakfast island in the kitchen
- Stunning views from upstairs with sea views in the distance
- Nice sized garden, perfect for barbecues with family and friends
- No onward chain

Accommodation

GROUND FLOOR

Entrance Hall
Lounge: 26'10 x 11'1 (8.18m x 3.38m)
Kitchen /Dining Area: 15'1 x 11'1 (4.60m x 3.38m)

FIRST FLOOR

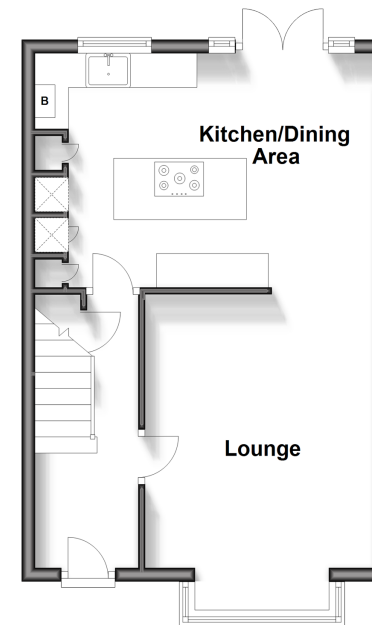
Landing
Bedroom 1: 11'10 x 9'1 (3.61m x 2.77m)
Bedroom 2 : 13'1 x 9'1 (3.99m x 2.77m)
Bedroom 3 : 7'1 x 7'1 (2.16m x 2.16m)
Bathroom: 7'1 x 4'10 (2.16m x 1.47m)
Separate Toilet: 7'1 x 2'1 (2.16m x 0.64m)

OUTSIDE

Front Garden
Front Driveway
Rear Garden

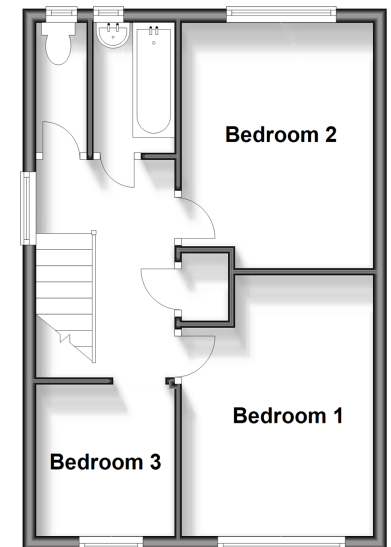
Ground Floor

Approx. 38.7 sq. metres (416.9 sq. feet)



First Floor

Approx. 37.6 sq. metres (405.0 sq. feet)



Call Sheerness - 01795 664651 ■ wardsofkent.co.uk

■ Legal advice should be taken to verify fixtures/fittings, planning, alterations and/or lease details
■ Through a Homewise Home For Life Plan people aged 60+ can secure this property for up to 59% less, by purchasing a Lifetime Lease.

■ Appliances & services are untested, dimensions are approximate and floor plans are not to scale



11624289/20240402/DS/JLS