



Price

£440,000

Freehold

4x  2x  1x 

**Shurland Avenue,
Minster On Sea, Kent,
ME12**

OVER 60?

Secure this property
for up to **59% less!**

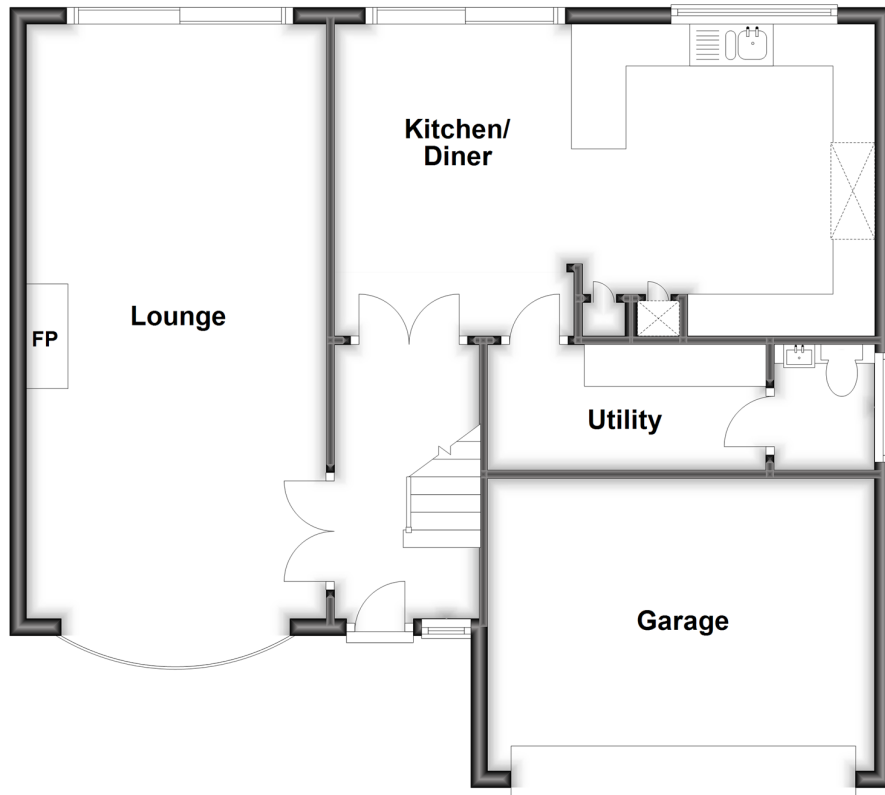


Video Tour available

Wards
Helping you move forwards

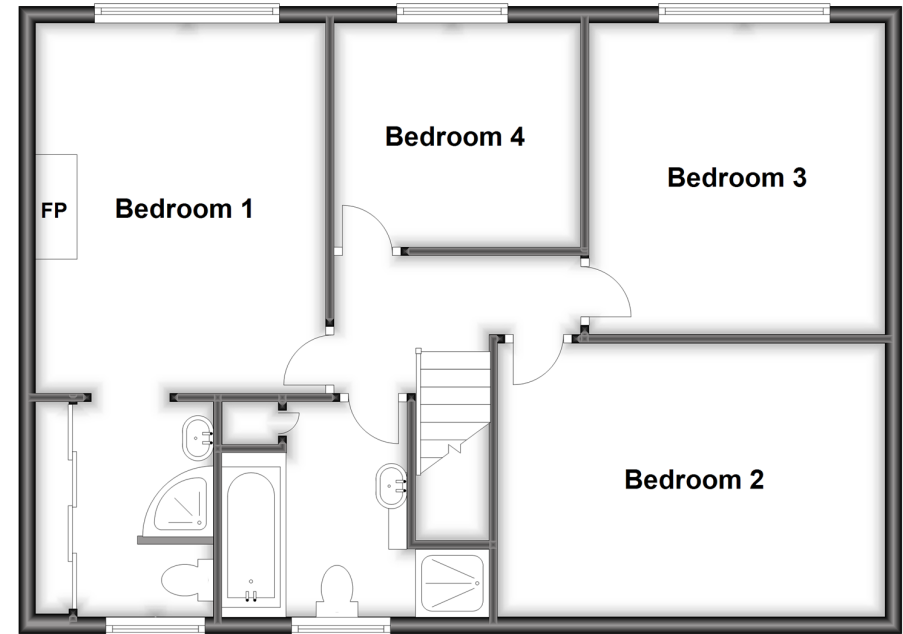
Ground Floor

Approx. 81.0 sq. metres (871.5 sq. feet)



First Floor

Approx. 72.2 sq. metres (776.9 sq. feet)



Accommodation

GROUND FLOOR

Entrance Hall
Downstairs Cloakroom: 4'8 x 4'7 (1.42m x 1.40m)
Utility Room: 10'0 x 4'9 (3.05m x 1.45m)
Lounge: 23'5 x 11'10 (7.14m x 3.61m)
Kitchen/Diner: 12'2 x 11'6 (3.71m x 3.51m)

FIRST FLOOR

Landing
Bedroom 1 : 14'9 x 12'0 (4.50m x 3.66m)
En-suite Shower Room
Bedroom 2 : 15'2 x 11'3 (4.63m x 3.43m)
Bedroom 3 : 12'4 x 11'4 (3.76m x 3.46m)
Bedroom 4 : 9'6 x 9'3 (2.90m x 2.82m)
Bathroom : 8'4 x 7'7 (2.54m x 2.31m)

OUTSIDE

Front Garden
Rear Garden
Driveway
Double Garage



Main features

- Bedroom 1 has the benefit of an en-suite shower room
- The perfect garden for pets and children
- A lovely double width garage, ideal for your classic cars and bikes
- The bathroom includes both a step in shower unit and a bath to soak in
- Spacious kitchen/diner, great for entertaining



Nearest Schools

Primary Schools: Minster in Sheppey Primary 0.4 miles, Halfway Houses Primary 1.3 miles

Secondary Schools: Oasis Academy 0.9 miles



Transport Information

Train Stations: Queenborough 2.9 miles, Sheerness-on-Sea 2.9 miles, Swale 3.8 miles



Address

Shurland Avenue, Minster On Sea, Kent, ME12



Directions

For directions to this property please contact us.



Wards
Helping you move forwards

Call Sheerness Branch 01795 664651 ■ wardsofkent.co.uk



■ Legal advice should be taken to verify fixtures/fittings, planning, alterations and/or lease details ■ Appliances & services are untested, dimensions are approximate and floor plans are not to scale
■ Through a Homewise Home For Life Plan people aged 60+ can secure this property for up to 59% less, by purchasing a Lifetime Lease.



11626995/20230125/DS/PA