



Price
£190,000

Freehold

3x  1x  2x 

**James Street,
Sheerness, Kent, ME12**

OVER 60?

Secure this property
for up to **59% less!**

Wards
Helping you move forwards



Main features

- Brisk walk into the town centre
- Can be sold with no forward chain
- Separate lounge and dining room
- Nice size garden with added bonus of an outbuilding
- Great for first time buyers or investors

Accommodation

GROUND FLOOR

Entrance Porch

Lounge: 13'1 x 13'0 (3.99m x 3.97m)

Dining Room: 13'1 x 11'1 (3.99m x 3.38m)

Kitchen: 11'11 x 6'1 (3.63m x 1.86m)

Utility Area

Bathroom: 6'1 x 6'0 (1.86m x 1.83m)

FIRST FLOOR

Landing

Bedroom 1: 14'0 x 13'0 (4.27m x 3.97m)

Bedroom 2: 13'1 x 11'1 (3.99m x 3.38m)

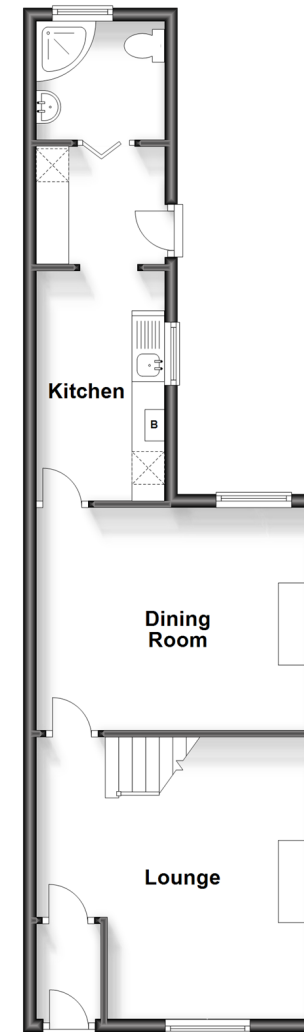
Bedroom 3: 11'1 x 6'11 (3.38m x 2.11m)

OUTSIDE

Rear Garden

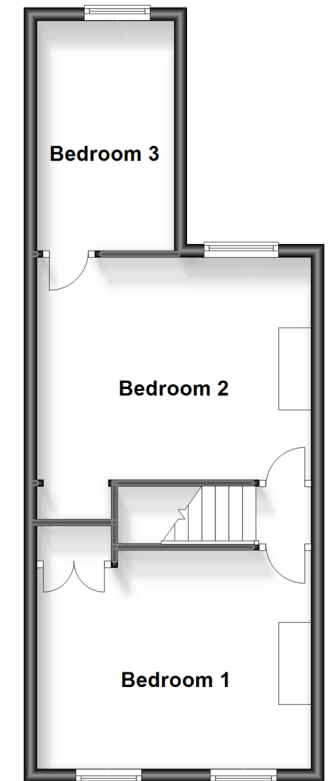
Ground Floor

Approx. 47.5 sq. metres (511.1 sq. feet)



Split Level First Floor

Approx. 40.5 sq. metres (436.0 sq. feet)



Call Sheerness - 01795 664651 ■ wardsforkent.co.uk

- Legal advice should be taken to verify fixtures/fittings, planning, alterations and/or lease details
- Appliances & services are untested, dimensions are approximate and floor plans are not to scale
- Through a Homewise Home For Life Plan people aged 60+ can secure this property for up to 59% less, by purchasing a Lifetime Lease.



11628117/20240309/DS/JLS