

OVER 60?

Secure this property
for up to **59% less!**



Price

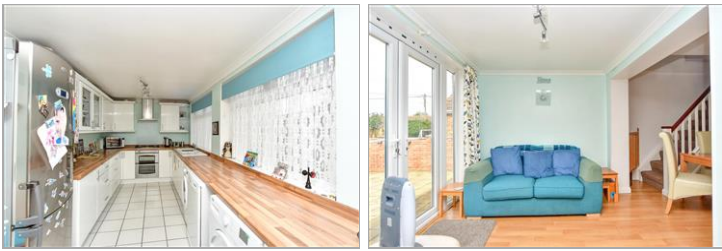
£350,000

Freehold

3x  2x  2x 

Barton Hill Drive, Minster On Sea, Kent,
ME12

Wards
Helping you move forwards



Main features

- Bathroom on the ground floor plus en-suite shower room upstairs
- Kitchen with a built-in oven, hob and extractor fan
- Walk-in wardrobe to the main bedroom
- Westerly facing aspect to the rear garden
- Great size kitchen/breakfast room

Accommodation

GROUND FLOOR

Entrance Hall

Lounge: 14'1 x 12'4 (4.30m x 3.76m)

Bedroom 2: 11'5 x 10'0 (3.48m x 3.05m)

Bedroom 3: 10'0 x 9'9 (3.05m x 2.97m)

Bathroom: 7'0 x 5'9 (2.14m x 1.75m)

Dining Area: 11'9 (3.58m) narrowing to 9'9 (2.97m) x 10'9 (3.28m)

kitchen/Breakfast Area: 24'5 x 8'3 (7.45m x 2.52m)

FIRST FLOOR

Landing

Bedroom 1: 15'7 x 13'5 (4.75m x 4.09m)

En-Suite Shower Room: 7'4 x 6'8 (2.24m x 2.03m)

Walk In Wardrobe: 6'9 x 5'7 (2.06m x 1.70m)

OUTSIDE

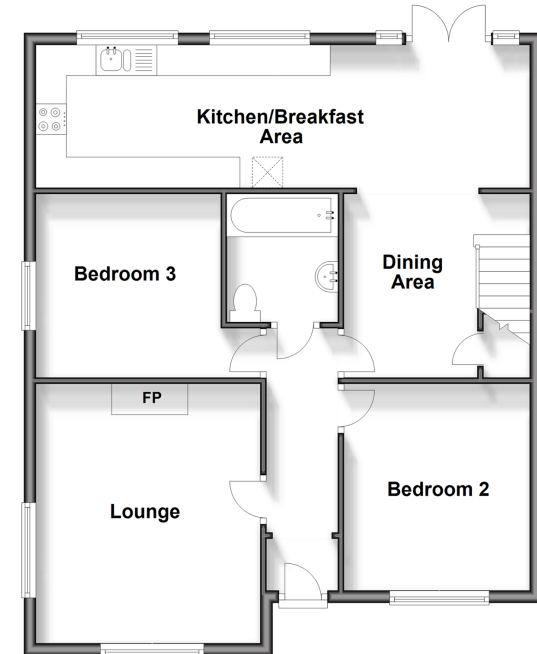
Front Garden

Rear Garden

Front Driveway

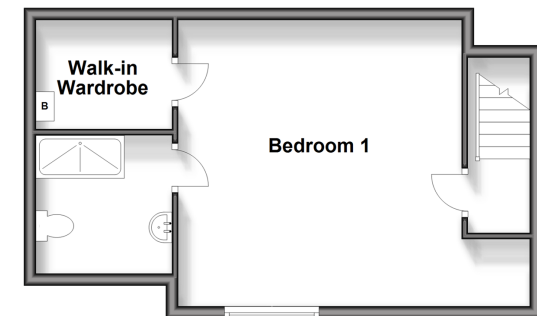
Ground Floor

Approx. 75.5 sq. metres (812.4 sq. feet)



First Floor

Approx. 36.1 sq. metres (388.2 sq. feet)



Call Sheerness - 01795 664651 ■ wardsofkent.co.uk

- Legal advice should be taken to verify fixtures/fittings, planning, alterations and/or lease details
- Appliances & services are untested, dimensions are approximate and floor plans are not to scale
- Through a Homewise Home For Life Plan people aged 60+ can secure this property for up to 59% less, by purchasing a Lifetime Lease.



11628650/20240408/GS/PA