



OVER 60?

Secure this property
for up to **59% less!**

Price

£325,000

Freehold

3x  2x  1x 

Barton Hill Drive, Minster On Sea, Kent,
ME12

Wards
Helping you move forwards



Main features

- Easy access to get off the island onto the A249
- Good size lounge overlooking the garden
- Handy utility room for all your washing
- Lovely sized rear garden with 2 workshops
- Plenty of off road parking to the front

Accommodation

GROUND FLOOR

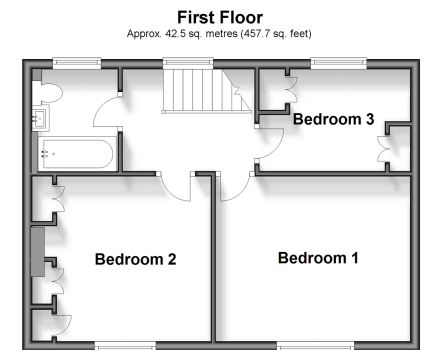
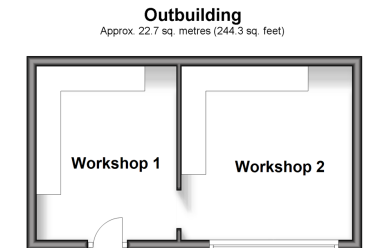
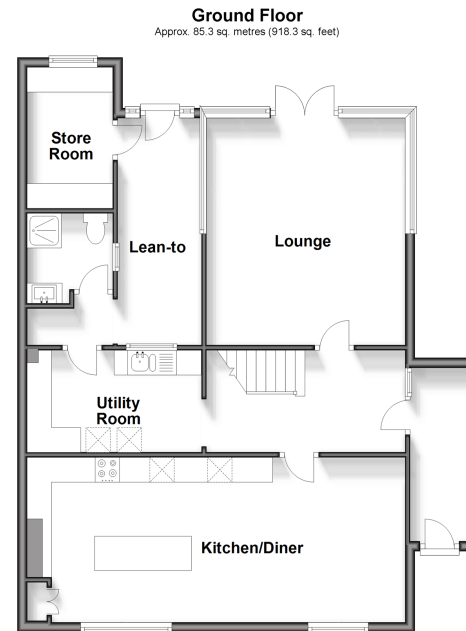
Entrance Porch
Entrance Hall
Lounge: 15'6 x 12'2 (4.73m x 3.71m)
Kitchen/Diner: 25'4 x 11'9 (7.73m x 3.58m)
Unity Room: 11'9 x 6'7 (3.58m x 2.01m)
Lean To
Store Room
Shower Room: 5'7 x 5'4 (1.70m x 1.63m)

FIRST FLOOR

Landing
Bedroom 1: 13'2 x 11'8 (4.02m x 3.56m)
Bedroom 2: 10'8 x 10'0 (3.25m x 3.05m)
Bedroom 3: 10'5 x 6'8 (3.18m x 2.03m)
Bathroom: 5'9 x 5'1 (1.75m x 1.55m)

OUTSIDE

Front Garden
Front Driveway
Rear Garden
Workshop 1: 11'4 x 9'5 (3.46m x 2.87m)
Workshop 2: 11'6 x 11'6 (3.51m x 3.51m)



Call Sheerness - 01795 664651 ■ wardsofkent.co.uk

■ Legal advice should be taken to verify fixtures/fittings, planning, alterations and/or lease details
■ Through a Homewise Home For Life Plan people aged 60+ can secure this property for up to 59% less, by purchasing a Lifetime Lease.

■ Appliances & services are untested, dimensions are approximate and floor plans are not to scale



11631442/20240408/DS/JLS