



OVER 60?

Secure this property
for up to **59% less!**

Price
£185,000

Freehold

2x  1x  2x 

**Harold Street,
Queenborough, Kent,
ME11**

Wards
Helping you move forwards



Main features

- Walk to Neats Court with its array of shopping outlets
- There is a lean to, ideal for storage
- Offered with no forward chain
- A great garden for barbecues and children to play in
- Lovely size lounge for you sofa and dining table & chairs

Accommodation

GROUND FLOOR

Entrance Porch

Lounge: 27'2 x 11'8 (8.29m x 3.56m)

Kitchen: 9'5 x 5'8 (2.87m x 1.73m)

Lean To: 14'3 x 5'5 (4.35m x 1.65m)

Inner Hallway

Shower Room: 6'4 x 5'8 (1.93m x 1.73m)

FIRST FLOOR

Landing

Bedroom 1: 13'3 x 8'8 (4.04m x 2.64m)

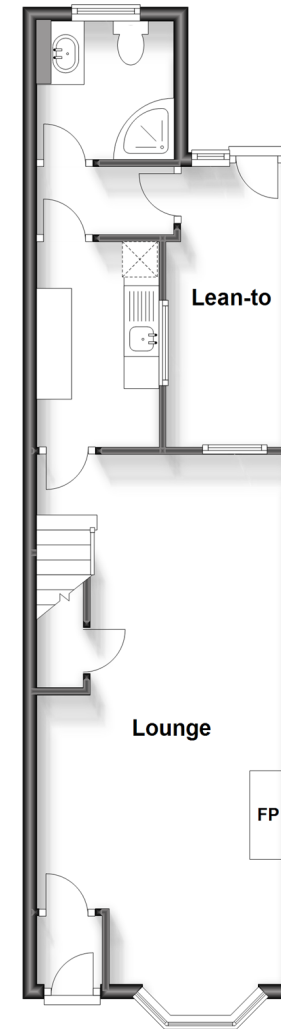
Bedroom 2: 11'7 x 11'0 (3.53m x 3.36m)

OUTSIDE

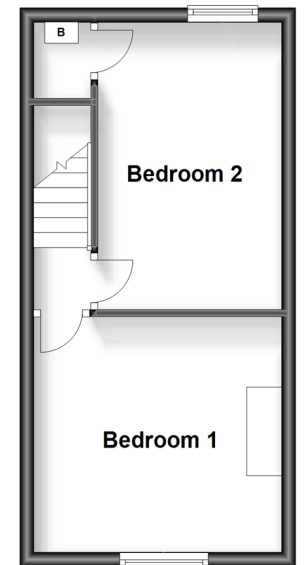
Front Garden

Rear Garden

Ground Floor
Approx. 45.1 sq. metres (485.6 sq. feet)



First Floor
Approx. 26.5 sq. metres (285.5 sq. feet)



Call Sheerness - 01795 664651 ■ wardsofkent.co.uk

- Legal advice should be taken to verify fixtures/fittings, planning, alterations and/or lease details
- Appliances & services are untested, dimensions are approximate and floor plans are not to scale
- Through a Homewise Home For Life Plan people aged 60+ can secure this property for up to 59% less, by purchasing a Lifetime Lease.

