



Price
£540,000

Freehold

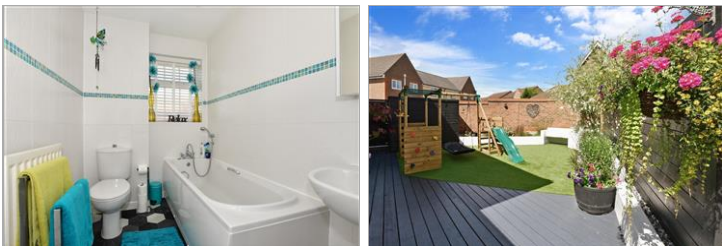
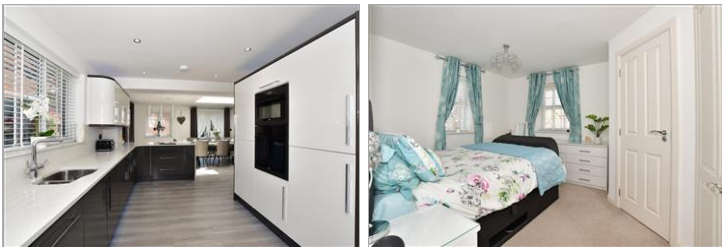
7x  4x  2x 

**Bellflower Avenue,
Minster On Sea, Kent,
ME12**

OVER 60?

You could get up to
59% off the price!*

Wards
Helping you move forwards



Main features

- Immaculate extended family home
- Stunning kitchen with integrated appliances and dining/family area
- CCTV throughout the house plus a high spec alarm system
- Family bathroom plus 2 en-suites
- 3 bedrooms downstairs ideal for a growing family

Accommodation

GROUND FLOOR

Entrance Hallway

Cloakroom

Bedroom 7: 8'0 x 6'0 (2.44m x 1.83m)

Bedroom 5: 11'0 x 8'0 (3.36m x 2.44m)

Kitchen: 27'0 x 10'0 (8.24m x 3.05m)

Dining/Family Area: 27'0 x 10'0 (8.24m x 3.05m)

Inner Hallway

Play Room (used as a bedroom): 11'0 x 8'0 (3.36m x 2.44m)

Shower Room

Bedroom 6: 10'0 x 8'0 (3.05m x 2.44m)

FIRST FLOOR

Landing

Bedroom 1: 11'0 x 11'0 (3.36m x 3.36m)

En Suite Shower Room: 5'0 x 5'0 (1.53m x 1.53m)

Bedroom 2: 9'0 x 8'10 (2.75m x 2.69m)

En Suite Shower Room

Bedroom 3: 10'6 x 6'11 (3.20m x 2.11m)

Bedroom 4: 8'1 x 8'0 (2.47m x 2.44m)

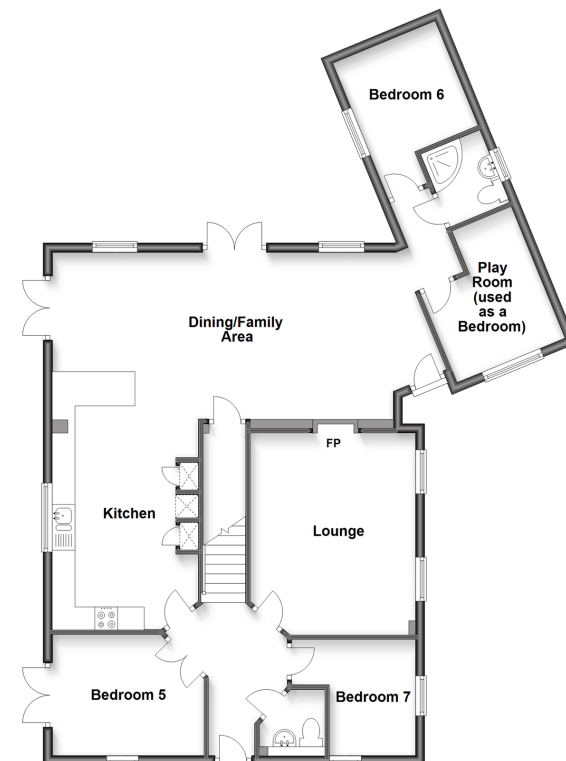
Bathroom: 7'0 x 5'0 (2.14m x 1.53m)

OUTSIDE

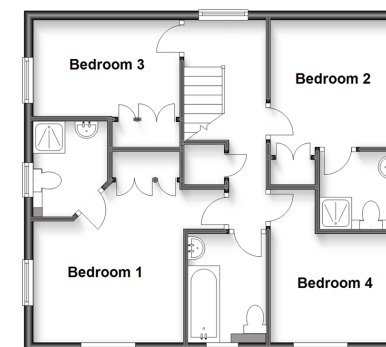
Off Road Parking

Rear Garden

Ground Floor
Approx. 106.7 sq. metres (1148.7 sq. feet)



First Floor
Approx. 56.0 sq. metres (602.3 sq. feet)



Call Sheerness - 01795 664651 ■ wardsofkent.co.uk

- Legal advice should be taken to verify fixtures/fittings, planning, alterations and/or lease details
- Appliances & services are untested, dimensions are approximate and floor plans are not to scale
- Our Homewise partnership offer a 'Home for Life' plan to buyers over 60, granting a lifetime lease for your protection and reducing the purchase price by up to 59%



11632712/20220905/KZ/CW