

OVER 60?

Secure this property
for up to **59% less!**



Price

£250,000

Freehold

3x  1x  1x 

Bluebell Close, Minster On Sea, Kent, ME12

Wards
Helping you move forwards



Main features

- Nice size driveway to the side of the house for a couple of cars
- Sit and relax in the conservatory
- Tucked out of the way in a cul-de-sac
- Modern kitchen includes a hob, oven and extractor fan
- Useful downstairs cloakroom, ideal for guests

Accommodation

GROUND FLOOR

Entrance Hall

Downstairs Cloakroom: 4'9 x 3'8 (1.45m x 1.12m)

Lounge: 14'1 x 11'8 (4.30m x 3.56m)

Kitchen/Diner: 14'6 x 8'1 (4.42m x 2.47m)

Conservatory: 8'0 x 7'5 (2.44m x 2.26m)

FIRST FLOOR

Landing

Bedroom 1: 12'0 x 10'8 (3.66m x 3.25m)

Bedroom 2: 11'3 x 7'5 (3.43m x 2.26m)

Bedroom 3: 8'7 x 6'3 (2.62m x 1.91m)

OUTSIDE

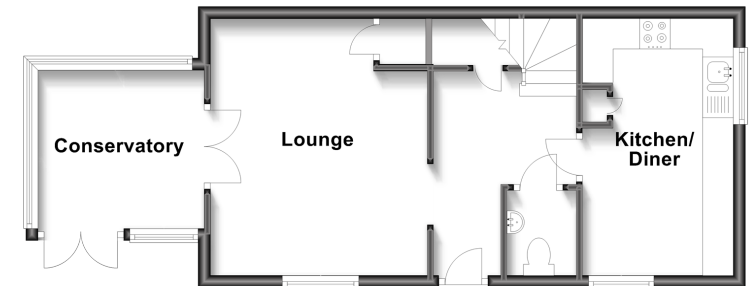
Front Garden

Driveway

Side Garden

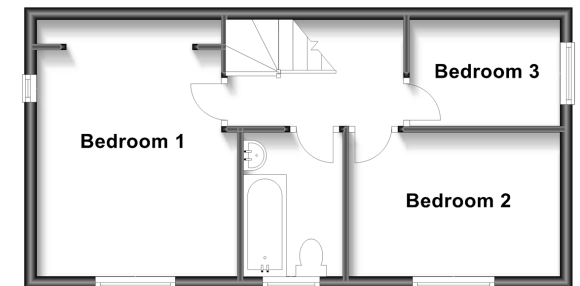
Ground Floor

Approx. 43.5 sq. metres (468.2 sq. feet)



First Floor

Approx. 36.2 sq. metres (389.2 sq. feet)



Call Sheerness - 01795 664651 ■ wardsofkent.co.uk

- Legal advice should be taken to verify fixtures/fittings, planning, alterations and/or lease details
- Appliances & services are untested, dimensions are approximate and floor plans are not to scale
- Through a Homewise Home For Life Plan people aged 60+ can secure this property for up to 59% less, by purchasing a Lifetime Lease.



11633764/20240423/PA/PA