



OVER 60?

You could get up to
59% off the price!*

Price

£295,000

Freehold

3x  2x  1x 

**Lavender Avenue,
Minster On Sea, Kent,
ME12**

Wards
Helping you move forwards



Main features

- En-suite shower room plus a family bathroom
- Allocated parking space to the rear
- Still with 5 years remaining on the NHBC Guarantee
- Handy Co-op just around the corner
- Local primary school close by

Accommodation

GROUND FLOOR

Entrance Hall

Downstairs Cloakroom

Lounge/Dining Area: 25'8 x 11'1 (7.83m x 3.38m)

Kitchen: 9'9 x 7'6 (2.97m x 2.29m)

FIRST FLOOR

Landing

Bedroom 1: 12'5 (3.79m) narrowing to 8'9 (2.67m) x 11'1 (3.38m)

En-suite Shower Room: 6'7 x 4'8 (2.01m x 1.42m)

Bedroom 2: 16'1 (4.91m) x 10'8 (3.25m) narrowing to 8'5 (2.57m)

Bedroom 3: 7'9 x 7'8 (2.36m x 2.34m)

Bathroom: 11'9 x 5'5 (3.58m x 1.65m)

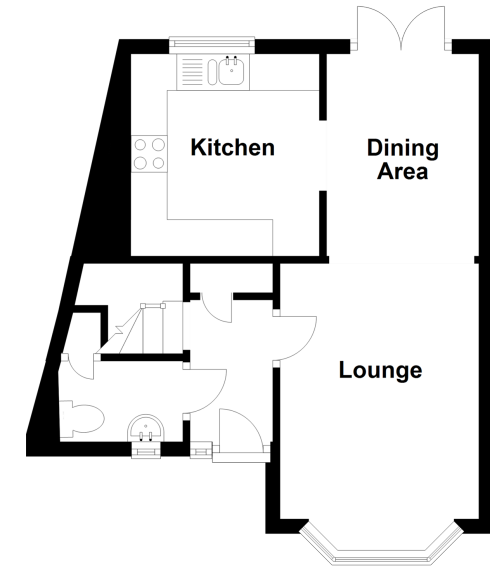
OUTSIDE

Front Garden

Rear Garden

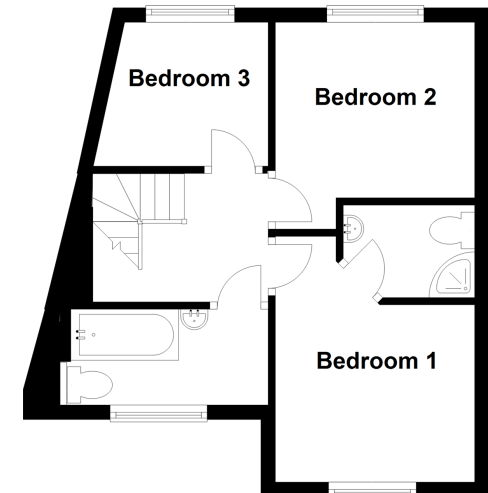
Ground Floor

Approx. 31.8 sq. metres (342.4 sq. feet)



First Floor

Approx. 31.2 sq. metres (335.8 sq. feet)



Call Sheerness - 01795 664651 ■ wardsforkent.co.uk

- Legal advice should be taken to verify fixtures/fittings, planning, alterations and/or lease details
- Appliances & services are untested, dimensions are approximate and floor plans are not to scale
- Our Homewise partnership offer a 'Home for Life' plan to buyers over 60, granting a lifetime lease for your protection and reducing the purchase price by up to 59%



11634154/20220402/DS/CW