



**Price**

**£550,000**

**Freehold**

4x  2x  2x 

**Court Tree Drive,  
Eastchurch, Kent, ME12**

**OVER 60?**

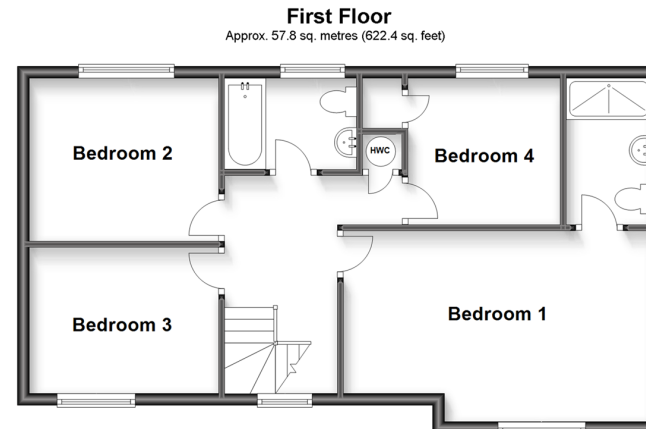
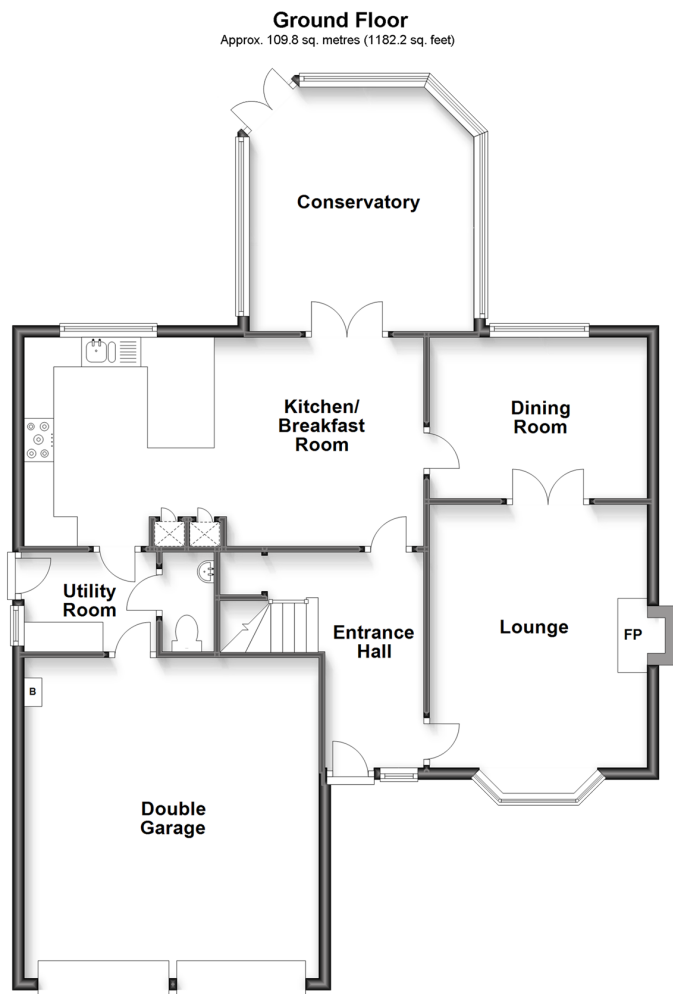
Secure this property  
for up to **59% less!**



**Video Tour available**

*Wards*

Helping you move forwards



## Accommodation

### GROUND FLOOR

Entrance Hall  
 Downstairs Cloakroom: 5'7 x 3'3 (1.70m x 0.99m)  
 Lounge: 16'6 x 12'0 (5.03m x 3.66m)  
 Kitchen/Breakfast Area: 22'3 x 11'6 (6.79m x 3.51m)  
 Dining Room: 12'0 x 9'9 (3.66m x 2.97m)  
 Utility Room: 7'8 x 5'8 (2.34m x 1.73m)  
 Conservatory: 12'8 x 12'5 (3.86m x 3.79m)

### FIRST FLOOR

Landing  
 Bedroom 1: 17'11 x 10'8 (5.46m x 3.25m)  
 En-suite Shower Room: 8'5 x 8'4 (2.57m x 2.54m)  
 Bedroom 2: 10'9 x 8'9 (3.28m x 2.67m)  
 Bedroom 3: 10'5 x 9'1 (3.18m x 2.77m)  
 Bedroom 4: 8'5 x 8'4 (2.57m x 2.54m)  
 Bathroom: 7'4 x 5'5 (2.24m x 1.65m)

### OUTSIDE

Front Garden  
 Front Driveway  
 Double Garage: 17'8 x 17'4 (5.39m x 5.29m)  
 Rear Garden





## Main features

- Chill and relax in the lovely size garden
- Fabulous log burner in the lounge to take the chill out the air
- Enjoy a glass of wine in the conservatory
- Modern kitchen with fitted appliances with a separate utility room
- Plenty of off road parking for cars or a motor home



### Nearest Schools

Primary Schools: Eastchurch C of E Primary 1.3 miles, St George's C of E Middle School 1.5 miles, Minster in Sheppey Primary 2.1 miles

Secondary Schools: Oasis Academy 3.0 miles, Fulston



### Transport Information

Train Stations: Sheerness-on-Sea 5.1 miles, Queenborough 5.6 miles, Swale 5.9 miles



### Address

Court Tree Drive, Eastchurch, Kent, ME12



### Directions

For directions to this property please contact us.





*Wards*  
Helping you move forwards

Call Sheerness Branch 01795 664651 ■ [wardsofkent.co.uk](http://wardsofkent.co.uk)



■ Legal advice should be taken to verify fixtures/fittings, planning, alterations and/or lease details ■ Appliances & services are untested, dimensions are approximate and floor plans are not to scale  
■ Through a Homewise Home For Life Plan people aged 60+ can secure this property for up to 59% less, by purchasing a Lifetime Lease.



11634370/20230119/KZ/PA