

OVER 60?

Secure this property
for up to **59% less!**



Price

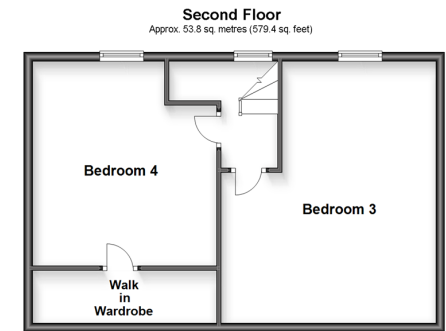
£450,000

Freehold

4x  1x  3x 

**Fig Tree House, High Street,
Queenborough, Kent, ME11**

Wards
Helping you move forwards



Accommodation

BASEMENT

Cellar 1: 19'0 x 10'0 (5.80m x 3.05m)

Cellar 2: 18'5 x 10'0 (5.62m x 3.05m)

SPLIT LEVEL GROUND FLOOR

Entrance Hall

Lounge: 25'9 (7.85m) narrowing to 18'5 (5.62m) x 12'3 (3.74m)

Family Room: 13'1 x 11'9 (3.99m x 3.58m)

Inner Hallway

Dining Room: 13'7 x 12'10 (4.14m x 3.91m)

Kitchen: 20'0 x 12'8 (6.10m x 3.86m)

Inner Lobby: 4'9 x 4'6 (1.45m x 1.37m)

Downstairs Toilet: 5'10 x 4'5 (1.78m x 1.35m)

FIRST FLOOR

Landing

Bedroom 1: 20'11 x 11'10 (6.38m x 3.61m)

Bedroom 2: 12'11 x 11'11 (3.94m x 3.63m)

Bathroom: 8'2 x 7'8 (2.49m x 2.34m)

SECOND FLOOR

Landing

Bedroom 3: 19'0 x 18'3 (5.80m x 5.57m)

Bedroom 4: 14'9 x 13'2 (4.50m x 4.02m)

Walk In Wardrobe: 13'2 x 3'11 (4.02m x 1.19m)

OUTSIDE

Front Garden

Rear Garden

Garage

Workshop

Off Road Parking



Main features

- Option to buy the rear part of the garden which has road access for £100,000
- Currently there is Planning Permission pending for 3 houses to be built on
- The basement area houses two cellars
- Take a relaxing stroll down to the harbour
- Loads of Character and original features
- Stroll to down to one of the local pubs and restaurants



Nearest Schools

Primary Schools: Halfway Houses Primary 1.7 miles, Rose Street Primary 2.6 miles, St Edward's Catholic Primary 2.8 miles

Secondary Schools: Oasis Academy 2.2 miles, Fulston



Transport Information

Train Stations: Queenborough 0.5 miles, Sheerness-on-Sea 2.5 miles, Swale 3.5 miles



Address

Fig Tree House, High Street, Queenborough, Kent, ME11



Directions

For directions to this property please contact us.



Call Sheerness Branch 01795 664651 ■ wardsofkent.co.uk



■ If buying to let, the energy rating will need to be improved to at least 'E' rating before you can let the property
■ Appliances & services are untested, dimensions are approximate and floor plans are not to scale

■ Legal advice should be taken to verify fixtures/fittings, planning, alterations and/or lease details
■ Through a Homewise Home For Life Plan people aged 60+ can secure this property for up to 59% less, by purchasing a Lifetime Lease.

11634403/20230517/DS/PA