



Guide Price
£260,000
Freehold

2x  1x  2x 

Halfway Road, Halfway, Kent, ME12

Wards
Helping you move forwards



Main features

- Beautiful surroundings of the new development at Sheppey Court
- In need of modernisation and refurbishment works
- Would certainly make a fabulous place to live
- Put your own stamp on the place
- Fabulous field views to one side, spectacular new development on the other

Accommodation

GROUND FLOOR

Entrance Hall

Lounge: 11'7 x 10'5 (3.53m x 3.18m)

Dining Area: 9'3 x 6'5 (2.82m x 1.96m)

Kitchen: 9'5 x 8'5 (2.87m x 2.57m)

Bedroom 1: 12'2 x 10'5 (3.71m x 3.18m)

Bedroom 2: 12'2 x 9'11 (3.71m x 3.02m)

Bathroom: 6'10 x 5'4 (2.08m x 1.63m)

OUTSIDE

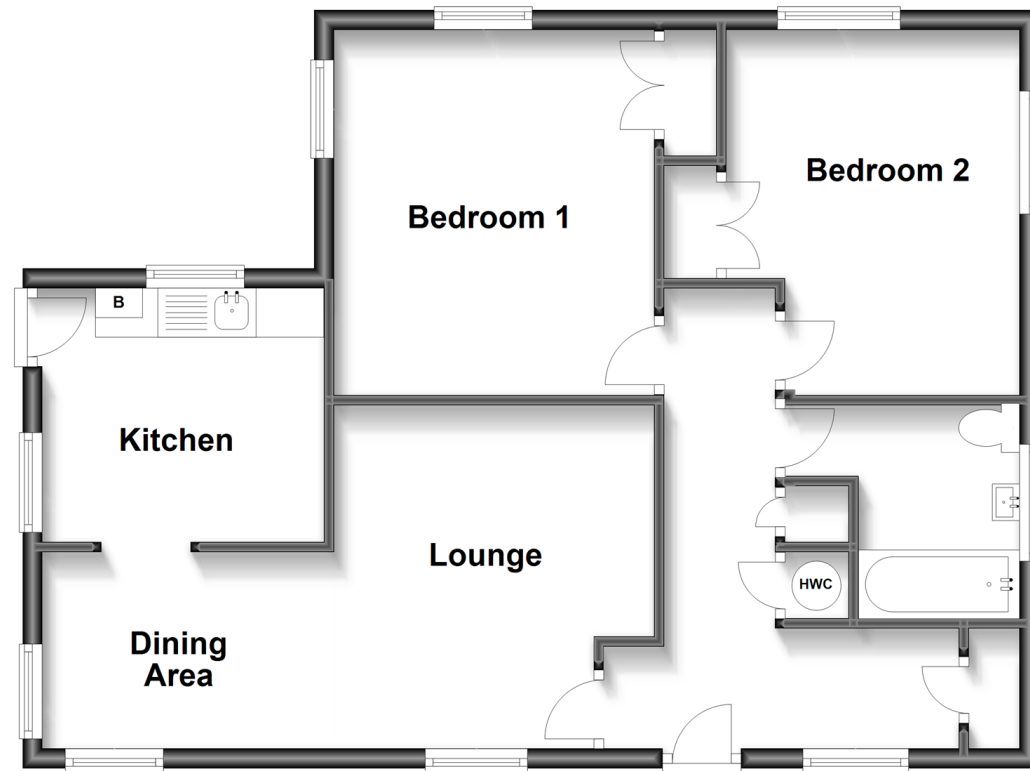
Front Garden

Side Garden

Off road parking behind gates

Ground Floor

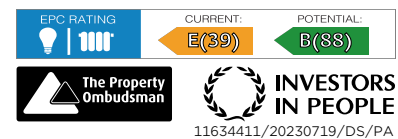
Approx. 65.4 sq. metres (704.0 sq. feet)



Call Sheerness - 01795 664651 ■ wardsofkent.co.uk

■ Legal advice should be taken to verify fixtures/fittings, planning, alterations and/or lease details

■ Appliances & services are untested, dimensions are approximate and floor plans are not to scale



11634411/20230719/DS/PA