

OVER 60?

You could get up to
59% off the price!*



Video Tour available

Price

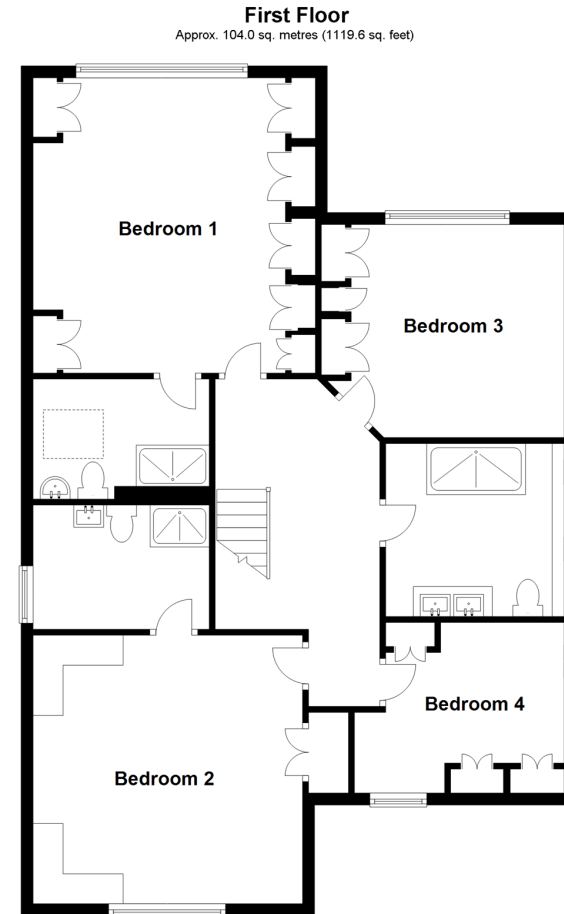
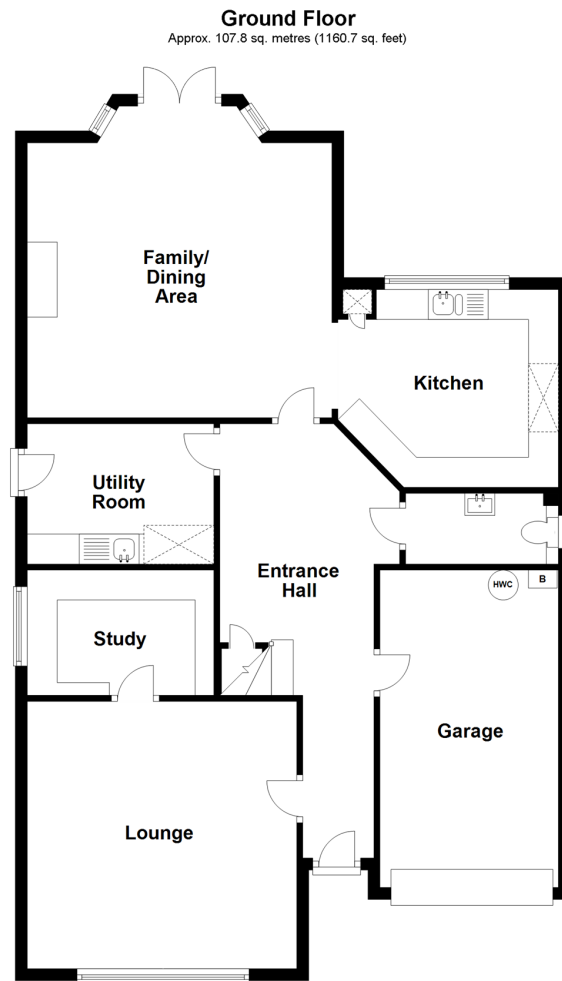
£575,000

Freehold

4x  2x  3x 

Augustine Road, Minster On Sea, Kent,
ME12

Wards
Helping you move forwards



Accommodation

GROUND FLOOR

Entrance Hall

Downstairs Cloakroom: 8'3 x 3'9 (2.52m x 1.14m)

Lounge: 14'10 x 14'8 (4.52m x 4.47m)

Study: 9'8 x 7'2 (2.95m x 2.19m)

Utility Room: 11'2 x 7'7 (3.41m x 2.31m)

Family/Dining Area: 17'8 (5.39m) narrowing to 15'4 (4.68m) x 15'9 (4.80m)

Kitchen: 13'4 x 11'1 (4.07m x 3.38m)

FIRST FLOOR

Landing

Bedroom 1: 15'10 into fitted wardrobes (4.83m) narrowing to 13'10 (4.22m) x 15'5 (4.70m)

En-suite Shower Room: 11'4 (3.46m) x 7'7 (2.31m) narrowing to 6'6 (1.98m)

Bedroom 2: 14'10 x 14'8 (4.52m x 4.47m)

En-suite Shower Room: 9'9 x 7'7 (2.97m x 2.31m)

Bedroom 3: 13'5 (4.09m) narrowing to 11'1 (3.38m) x 11'7 (3.53m)

Bedroom 4: 12'1 x 10'1 (3.69m x 3.08m)

Bathroom: 9'5 x 8'6 (2.87m x 2.59m)

ANNEXE

Annexe Lounge: 11'9 x 10'9 (3.58m x 3.28m)

Shower Room: 9'0 x 4'0 (2.75m x 1.22m)

Annexe Kitchen: 9'9 x 7'1 (2.97m x 2.16m)

Bedroom: 13'0 x 11'8 (3.97m x 3.56m)

OUTSIDE

Front Driveway

Garage

Front Garden

Rear Garden



Main features

- A fabulous self contained annexe perfect for mum and dad
- 2 en-suites plus a bathroom and a downstairs cloakroom
- A lovely southerly aspect rear garden
- A great size entrance hall and landing
- Luxury flooring, carpets and plantation window shutters



Nearest Schools

Primary Schools: Minster in Sheppey Primary 0.8 miles, St George's C of E Middle School 1.3 miles

Secondary Schools: Oasis Academy 1.6 miles, The Westlands School 7.2 miles



Transport Information

Train Stations: Sheerness-on-Sea 2.6 miles, Queenborough 4.1 miles, Swale 4.5 miles



Address

Augustine Road, Minster On Sea, Kent, ME12



Directions

For directions to this property please contact us.





Wards
Helping you move forwards

Call Sheerness Branch 01795 664651 ■ wardsofkent.co.uk



- Legal advice should be taken to verify fixtures/fittings, planning, alterations and/or lease details
- Appliances & services are untested, dimensions are approximate and floor plans are not to scale
- Our Homewise partnership offer a 'Home for Life' plan to buyers over 60, granting a lifetime lease for your protection and reducing the purchase price by up to 59%



11634441/20221012/DS/PA