



OVER 60?

Secure this property
for up to **59% less!**



Video Tour available

Price

£395,000

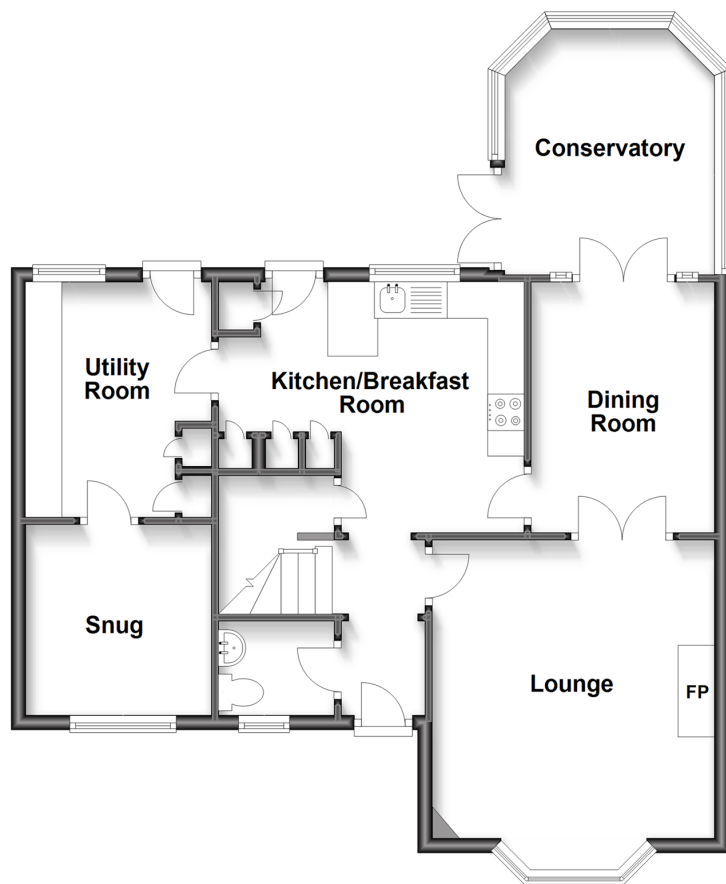
Freehold

3x  2x  1x 

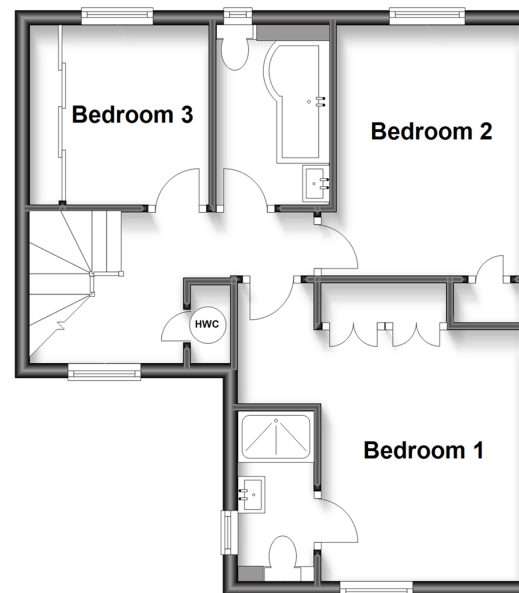
**Scotchmen Close,
Minster-On-Sea, Kent,
ME12**

Wards
Helping you move forwards

Ground Floor
Approx. 72.2 sq. metres (777.6 sq. feet)



First Floor
Approx. 42.6 sq. metres (458.7 sq. feet)



Accommodation

GROUND FLOOR

Entrance Hall
Downstairs Cloakroom: 4'5 x 4'1 (1.35m x 1.25m)
Lounge: 13'4 x 12'9 (4.07m x 3.89m)
Dining Room: 10'6 x 8'3 (3.20m x 2.52m)
Kitchen/Breakfast Room: 13'11 x 10'0 (4.24m x 3.05m)
Conservatory: 10'6 x 9'0 (3.20m x 2.75m)
Utility Room: 16'6 x 8'0 (5.03m x 2.44m)
Snug: 8'7 x 7'11 (2.62m x 2.41m)

FIRST FLOOR

Landing
Bedroom 1: 12'8 (3.86m) narrowing to 8'10 (2.69m) x 11'1 (3.38m)
En-suite Shower Room: 7'9 x 3'7 (2.36m x 1.09m)
Bedroom 2: 10'11 (3.33m) x 8'8 (2.64m) narrowing to 7'10 (2.39m)
Bedroom 3: 7'10 x 7'9 (2.39m x 2.36m)
Bathroom: 6'11 x 5'0 (2.11m x 1.53m)

OUTSIDE

Front Garden
Front Driveway
Rear Garden



Main features

- Beautifully presented both inside and out
- Bedroom 3 currently used as a dressing room
- The kitchen includes an eye level built in double oven
- Useful downstairs cloakroom ideal for guests
- Garage converted into a utility room plus separate snug



Nearest Schools

Primary Schools: Halfway Houses Primary 0.3 miles,
Richmond Primary 0.8 miles

Secondary Schools: Oasis Academy 0.4 miles



Transport Information

Train Stations: Sheerness-on-Sea 1.4 miles,
Queenborough 1.4 miles, Swale 2.8 miles



Address

Scotchmen Close, Minster-On-Sea, Kent, ME12



Directions

For directions to this property please contact us.





Call Sheerness Branch 01795 664651 ■ wardsofkent.co.uk



- Legal advice should be taken to verify fixtures/fittings, planning, alterations and/or lease details
- Appliances & services are untested, dimensions are approximate and floor plans are not to scale
- Through a Homewise Home For Life Plan people aged 60+ can secure this property for up to 59% less, by purchasing a Lifetime Lease.



11634634/20230717/JLS/PA