



**Price**  
**£650,000**

**Freehold**

4x  2x  1x 

**Danedale Avenue,  
Minster-On-Sea, Kent,  
ME12**

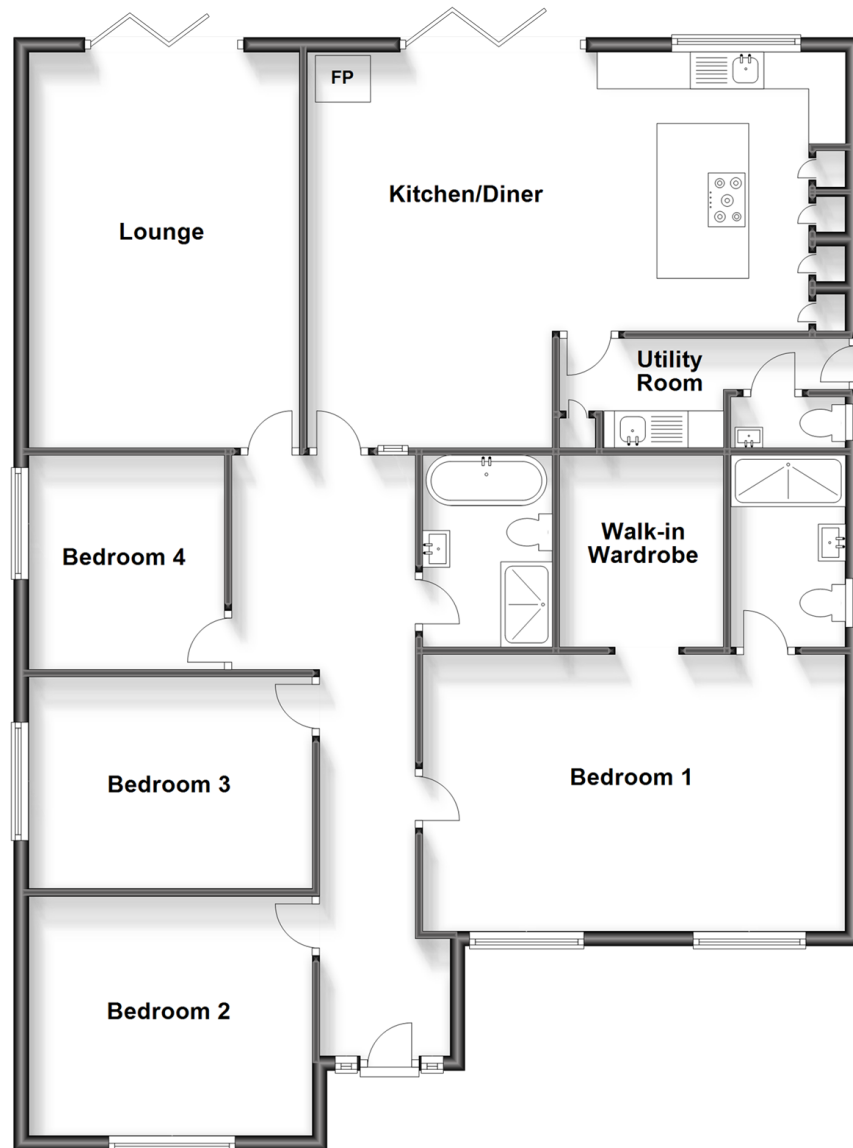
**OVER 60?**

Secure this property  
for up to **59% less!**

*Wards*  
Helping you move forwards

## Ground Floor

Approx. 146.3 sq. metres (1574.4 sq. feet)



## Accommodation

### GROUND FLOOR

Entrance Hall

Downstairs Cloakroom: 5'0 x 2'7 (1.53m x 0.79m)

Lounge: 18'1 x 12'0 (5.52m x 3.66m)

Kitchen/Diner: 22'0 (6.71m) x 18'7 (5.67m)  
narrowing to 13'2 (4.02m)

Utility Room: 12'5 (3.79m) narrowing to 7'1 (2.16m) x 5'9 (1.75m)

Bathroom: 9'0 x 6'1 (2.75m x 1.86m)

Bedroom 1: 18'1 x 12'5 (5.52m x 3.79m)

En-Suite Shower Room: 7'2 x 4'1 (2.19m x 1.25m)

Walk In Wardrobe: 7'0 x 7'0 (2.14m x 2.14m)

Bedroom 2: 12'7 x 10'8 (3.84m x 3.25m)

Bedroom 3: 12'8 x 9'6 (3.86m x 2.90m)

Bedroom 4: 9'7 x 8'9 (2.92m x 2.67m)

### OUTSIDE

Rear Garden

Front Drive





## Main features

- Just under 1 acre of ground with stables
- Recently installed log burner in the open planned kitchen
- Fully renovated works include electrics, shower room & all floor coverings
- Stunning kitchen with 2 ovens & a breakfast bar
- Separate utility room plus a separate cloakroom



### Nearest Schools

Primary Schools: , Minster in Sheppey Primary 1.0 miles, Eastchurch C of E Primary 2.0 miles

Secondary Schools: Oasis Academy 2.0 miles, Fulston Manor School 7.1 miles



### Transport Information

Train Stations: Queenborough 4.0 miles, Sheerness-on-Sea 4.1 miles, Swale 4.9 miles



### Address

Danedale Avenue, Minster-On-Sea, Kent, ME12



### Directions

For directions to this property please contact us.





**Wards**  
Helping you move forwards

Call Sheerness Branch 01795 664651 ■ [wardsofkent.co.uk](http://wardsofkent.co.uk)



■ Legal advice should be taken to verify fixtures/fittings, planning, alterations and/or lease details ■ Appliances & services are untested, dimensions are approximate and floor plans are not to scale  
■ Through a Homewise Home For Life Plan people aged 60+ can secure this property for up to 59% less, by purchasing a Lifetime Lease.



11634652/20231123/PA/PA